

Reynards Road, Welwyn Hertfordshire, AL6

Approximate Gross Internal Floor Area : 1896 sq ft / 176.1 sq m (Excluding Outbuilding)
Approximate Gross Internal Floor Area : 2729 sq ft / 253.5 sq m (Including Outbuilding)

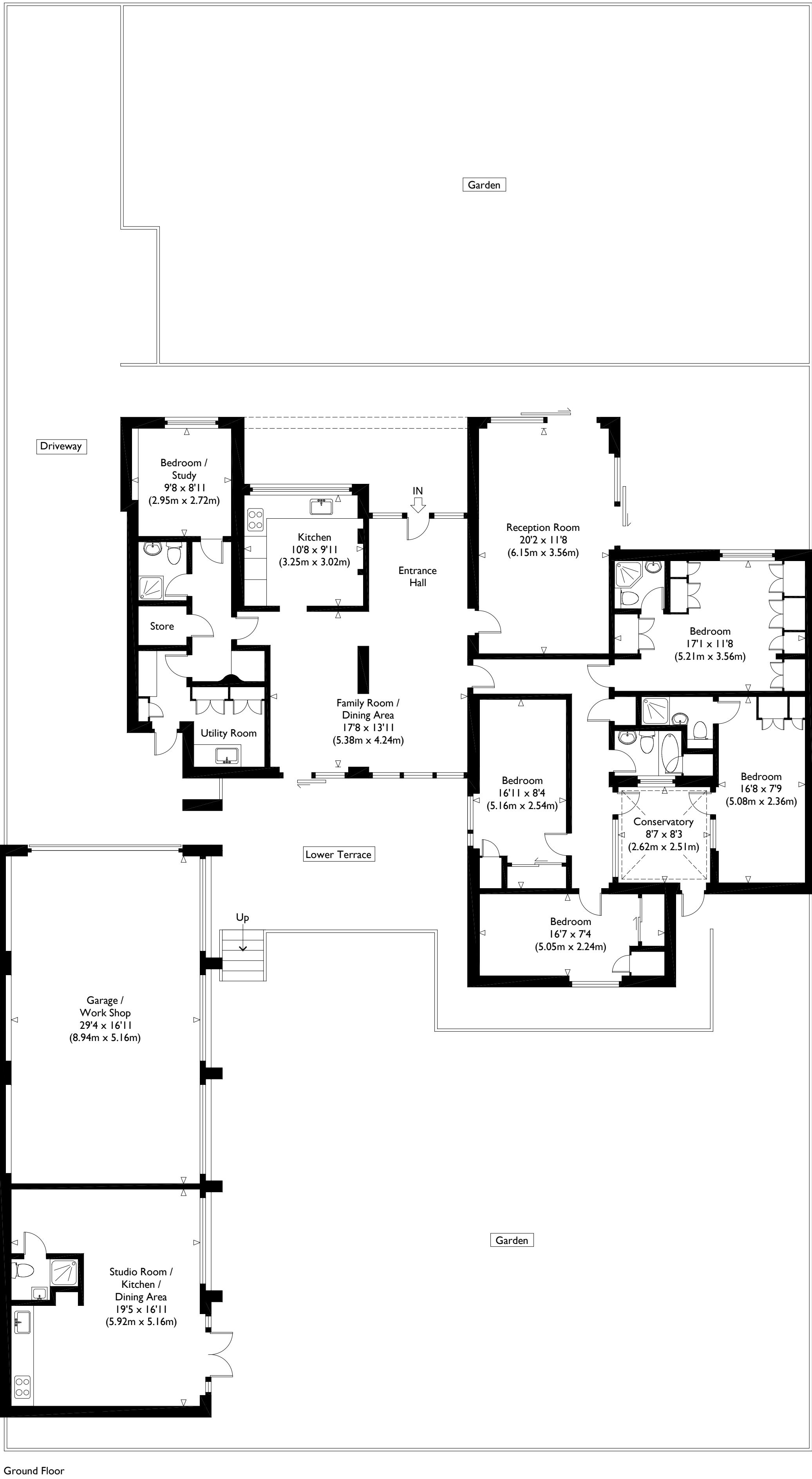
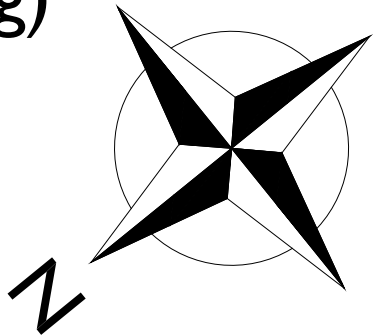


Illustration for identification purposes only, measurements are approximate, not to scale.