

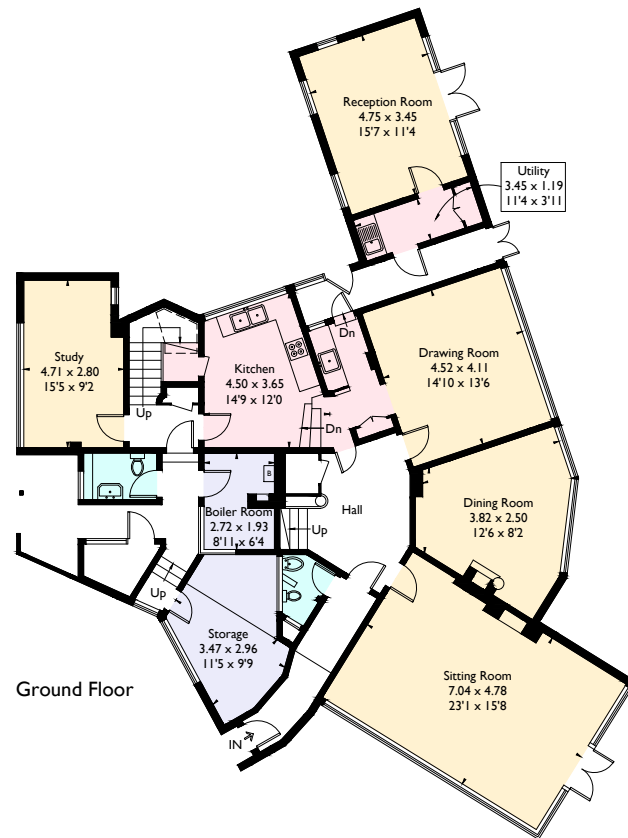
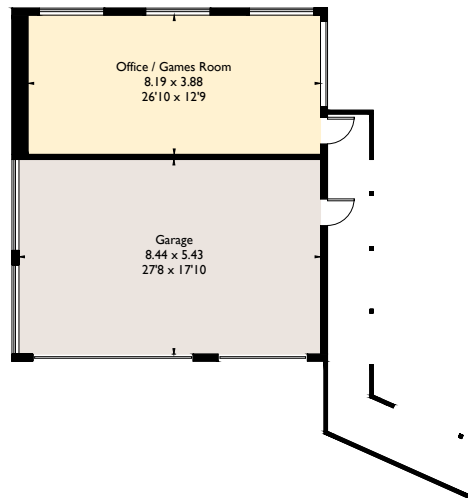
# Grayswood Road, Grayswood, Haslemere

Approximate Gross Internal Area = 342.1 sq m / 3682 sq ft

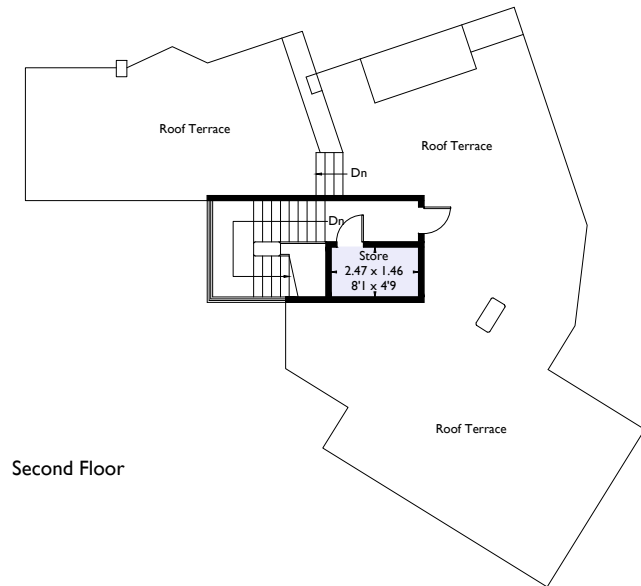
Garage = 46 sq m / 495 sq ft

Office / Games Room = 31.9 sq m / 343 sq ft

Total = 420 sq m / 4521 sq ft



Ground Floor



Second Floor



First Floor

FLOORPLANZ © 2015 0845 6344080 Ref: 154127

This plan is for layout guidance only. Drawn in accordance with RICS guidelines. Not drawn to scale unless stated. Windows & door openings are approximate. Whilst every care is taken in the preparation of this plan, please check all dimensions, shapes & compass bearings before making any decisions reliant upon them.