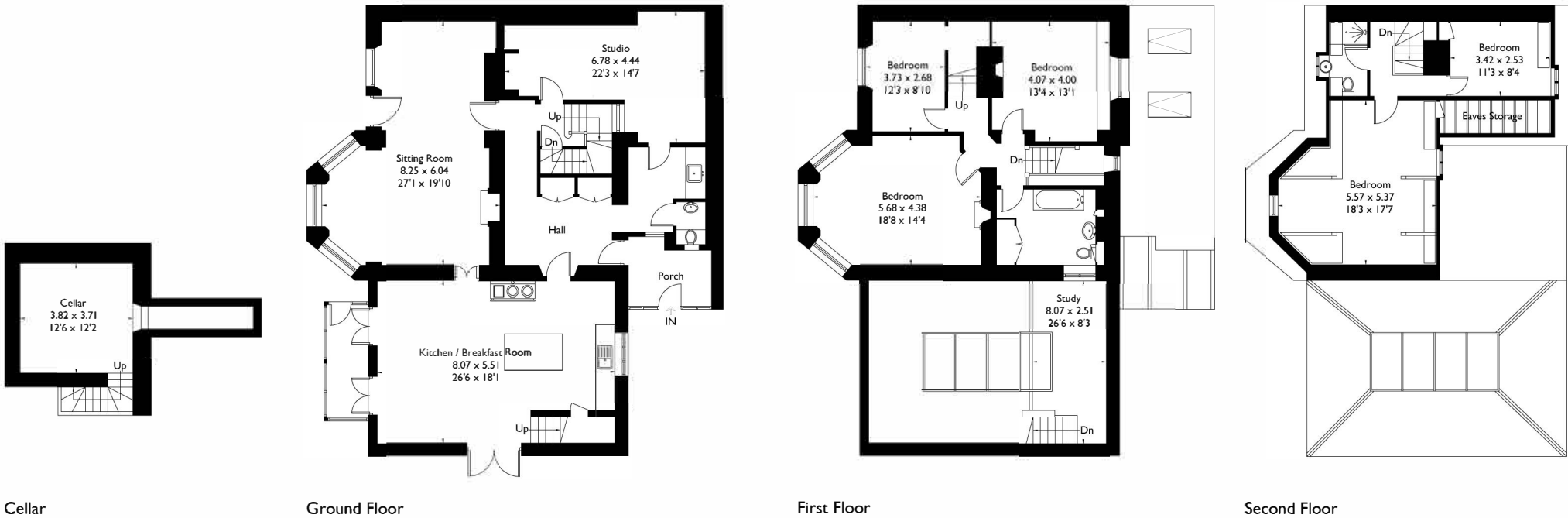


Stroud, Gloucestershire

Approximate Gross Internal Area = 325.1 sq m / 3499 sq ft (Excluding Eaves Storage)

Cellar = 20.6 sq m / 222 sq ft

Total = 345.7 sq m / 3721 sq ft



FLOORPLANZ © 2016

This plan is for layout guidance only. Drawn in accordance with RICS guidelines. Not drawn to scale unless stated. Windows & door openings are approximate. Whilst every care is taken in the preparation of this plan, please check all dimensions, shapes & compass bearings before making any decisions reliant upon them.