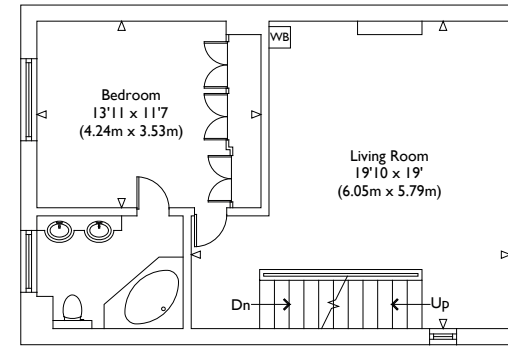
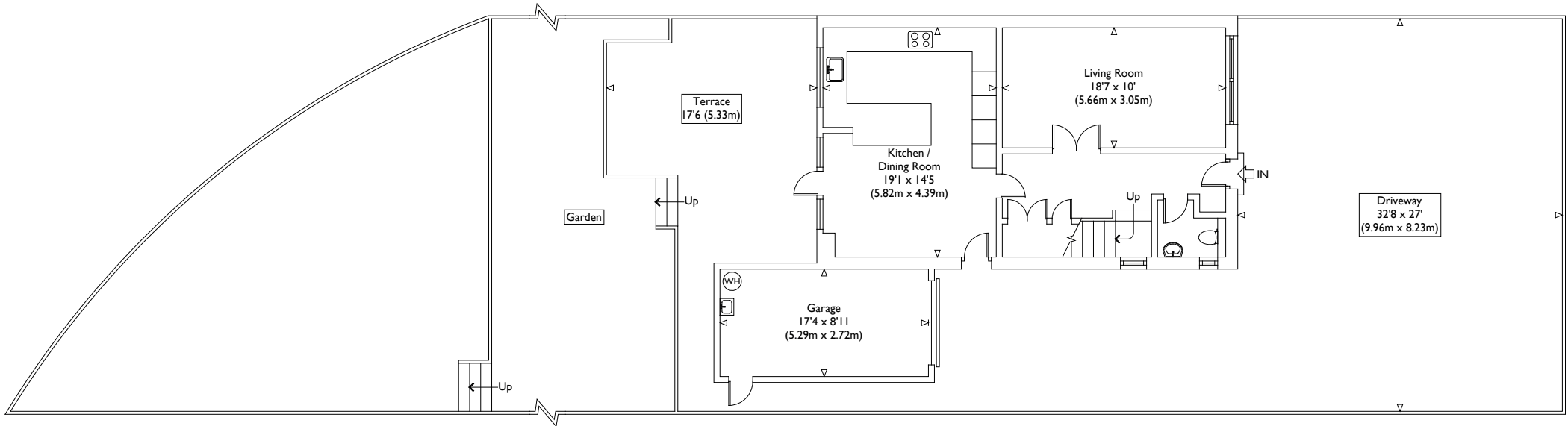


Second Floor



First Floor



Ground Floor

Illustration for identification purposes only, measurements are approximate, not to scale.

VIEWING ARRANGEMENTS
Telephone: +44 (0)20 3795 5920
Email: viewings@themodernhouse.com

AVENUE ROAD, LONDON N6

Approximate Gross Internal Floor Area : 1755 sq ft / 163.0 sq m (Excluding Garage)
Approximate Gross Internal Floor Area : 1910 sq ft / 177.4 sq m (Including Garage)

THE MODERN HOUSE