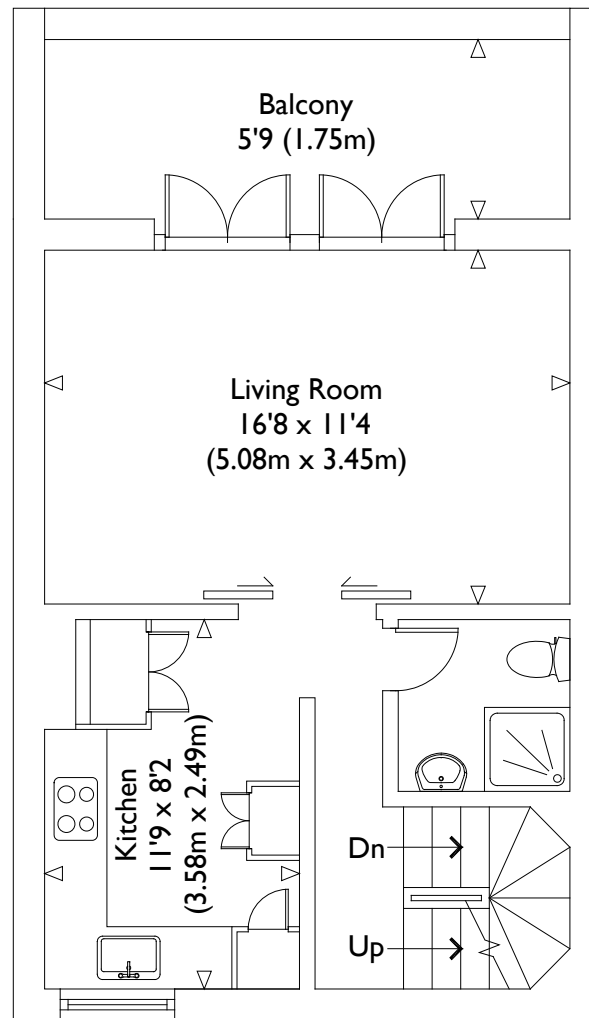
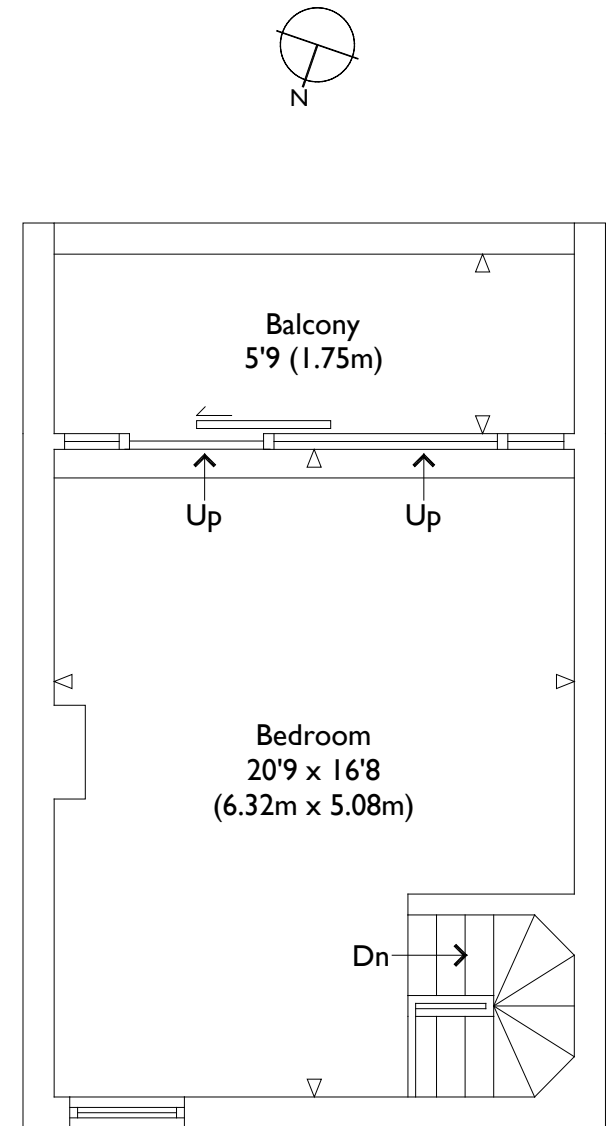


Raised Ground Floor



First Floor



Second Floor

Illustration for identification purposes only, measurements are approximate, not to scale.

VIEWING ARRANGEMENTS
Telephone: +44 (0)20 3795 5920
Email: viewings@themodernhouse.com

STONELEIGH TERRACE, LONDON, N19

Approximate Gross Internal Floor Area : 1160 sq ft / 107.8 sq m

THE MODERN HOUSE