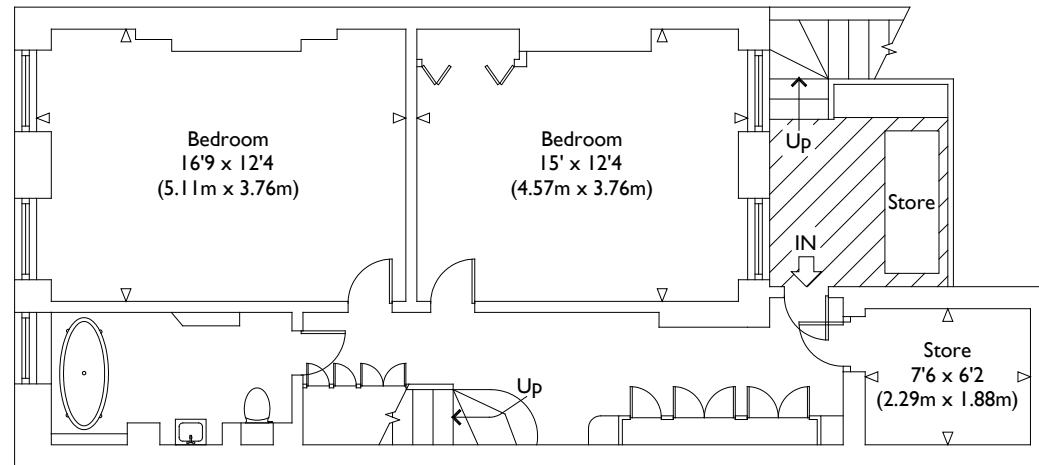


Raised Ground Floor



Lower Ground Floor

Illustration for identification purposes only, measurements are approximate, not to scale.

VIEWING ARRANGEMENTS  
Telephone: +44 (0)20 3795 5920  
Email: [viewings@themodernhouse.com](mailto:viewings@themodernhouse.com)

BERESFORD TERRACE, LONDON N5

Approximate Gross Internal Floor Area : 1201 sq ft / 111.6 sq m

THE MODERN HOUSE