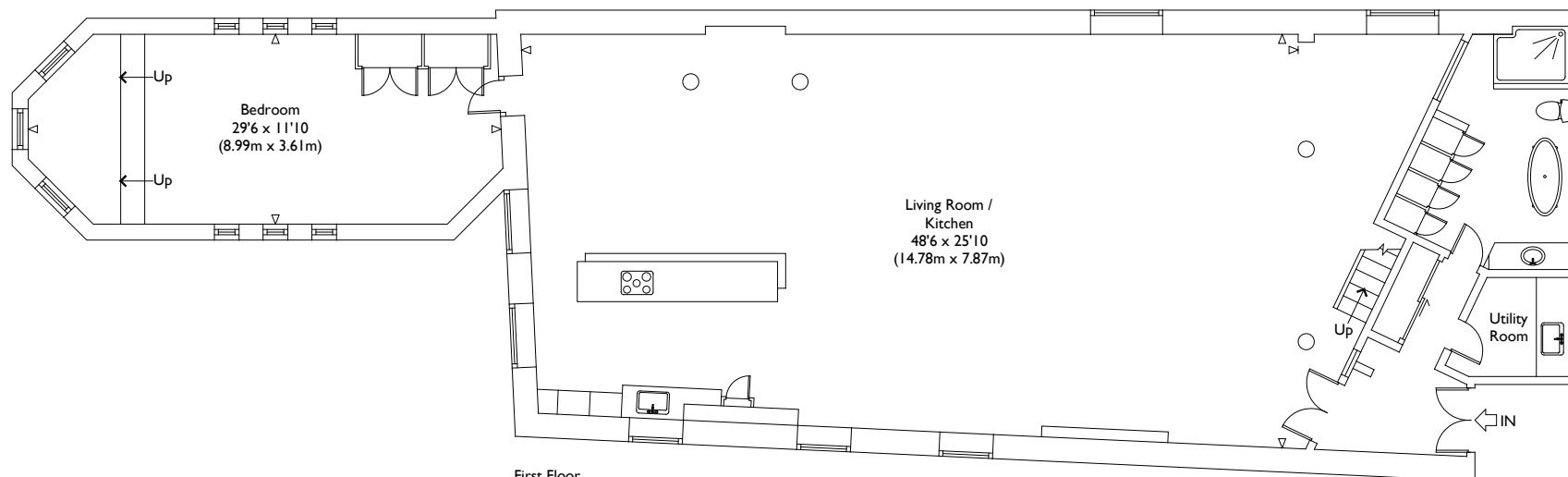


Mezzanine



First Floor

Illustration for identification purposes only, measurements are approximate, not to scale.

VIEWING ARRANGEMENTS  
Telephone: +44 (0)20 3795 5920  
Email: [viewings@themodernhouse.com](mailto:viewings@themodernhouse.com)

VICTORIA PARK SQUARE, LONDON E2

Approximate Gross Internal Floor Area : 2245 sq ft / 208.6 sq m (Excluding Void)

