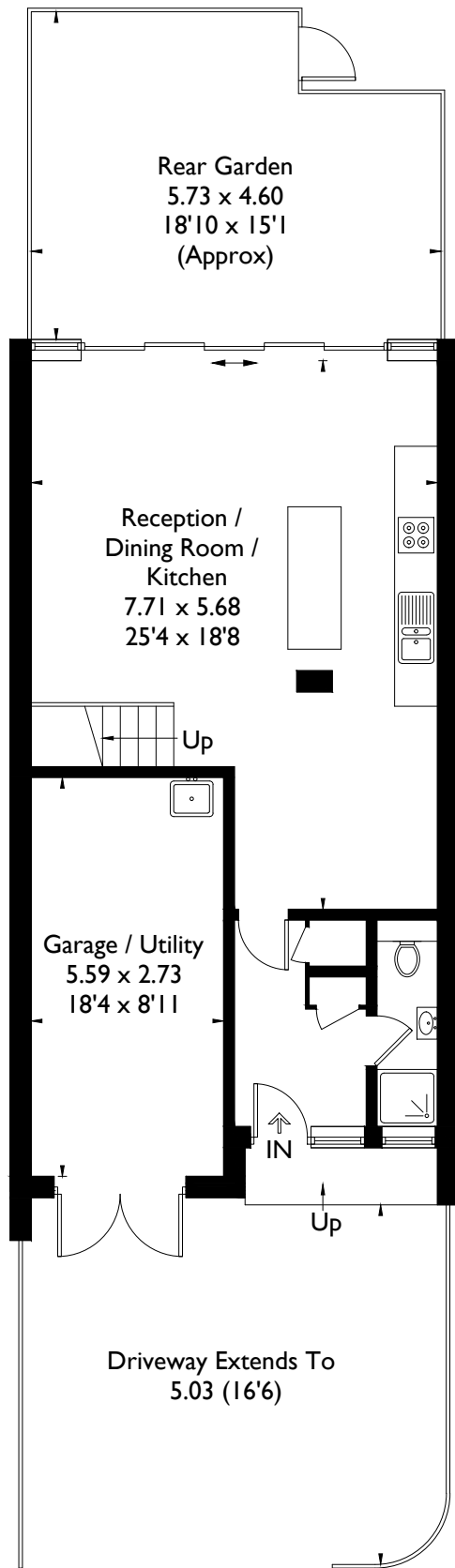


Lings Coppice, SE21

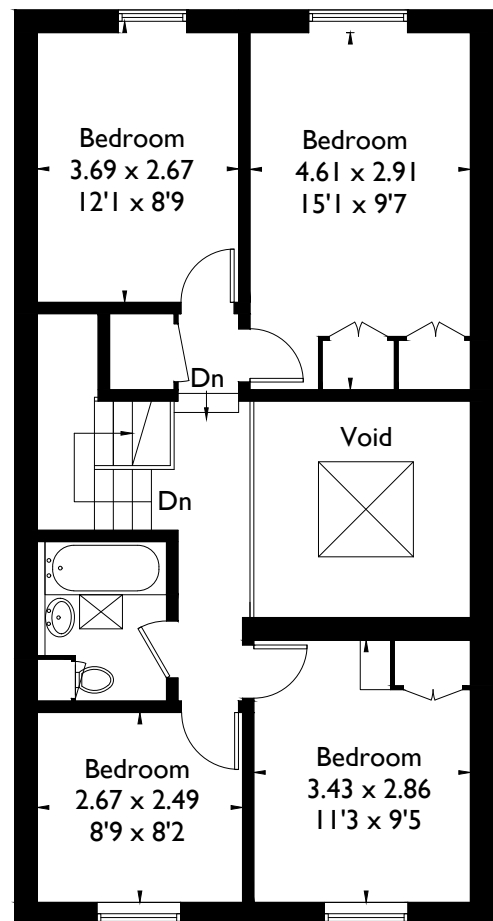
Approximate Gross Internal Area = 103.7 sq m / 1116 sq ft (Excluding Void)

Garage / Utility = 15.4 sq m / 166 sq ft

Total = 119.1 sq m / 1282 sq ft



Ground Floor



First Floor

FLOORPLANZ © 2017 0203 9056099 Ref: 195877

This plan is for layout guidance only. Drawn in accordance with RICS guidelines. Not drawn to scale unless stated. Windows & door openings are approximate. Whilst every care is taken in the preparation of this plan, please check all dimensions, shapes & compass bearings before making any decisions reliant upon them.