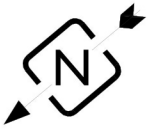
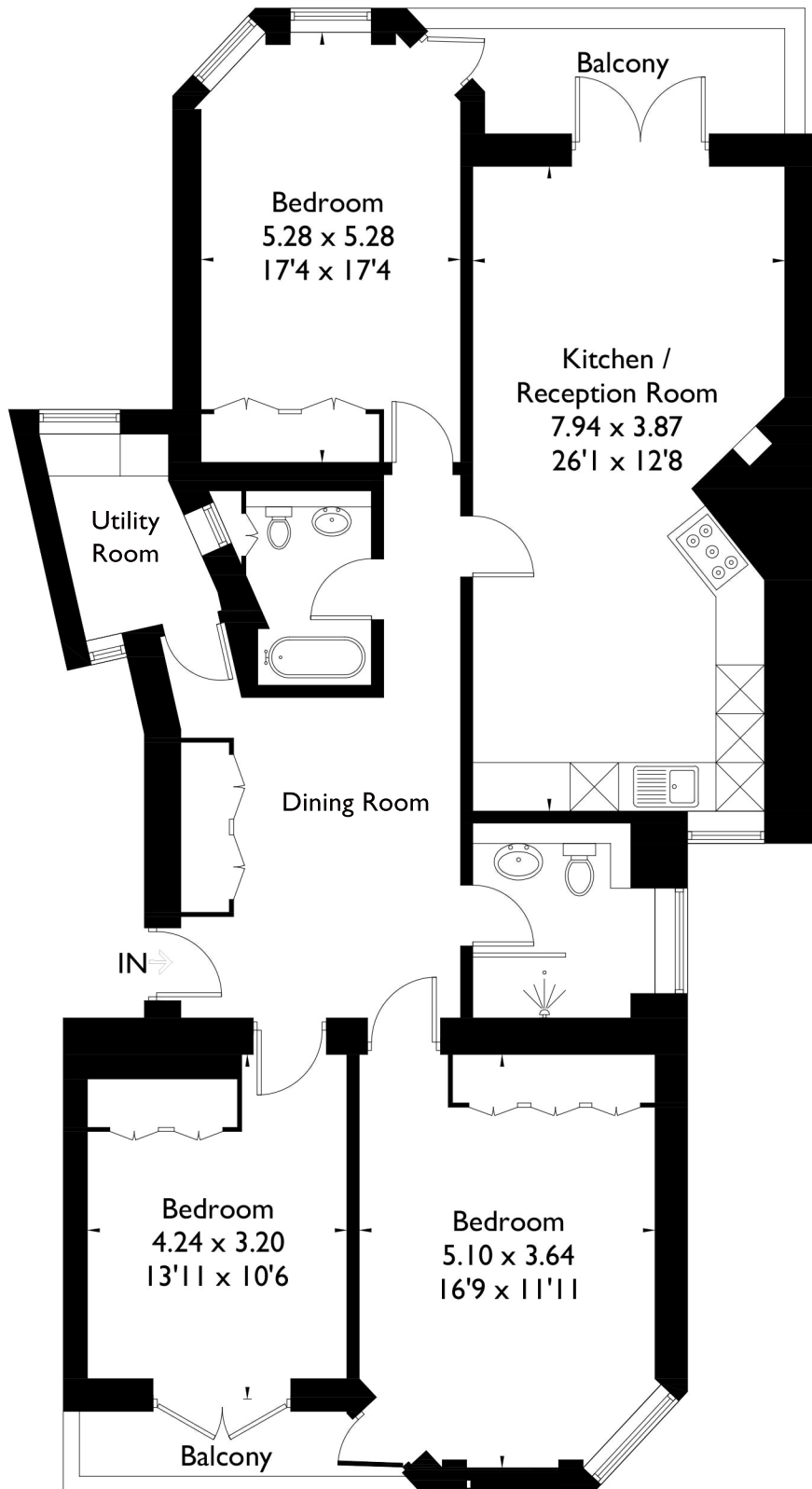


# Lissenden Mansions, Lissenden Gardens, NW5



Approximate Gross Internal Area = 116.3 sq m / 1252 sq ft



## First Floor

FLOORPLANZ © 2017 0203 9056099 Ref: 198004

This plan is for layout guidance only. Drawn in accordance with RICS guidelines. Not drawn to scale unless stated. Windows & door openings are approximate. Whilst every care is taken in the preparation of this plan, please check all dimensions, shapes & compass bearings before making any decisions reliant upon them.