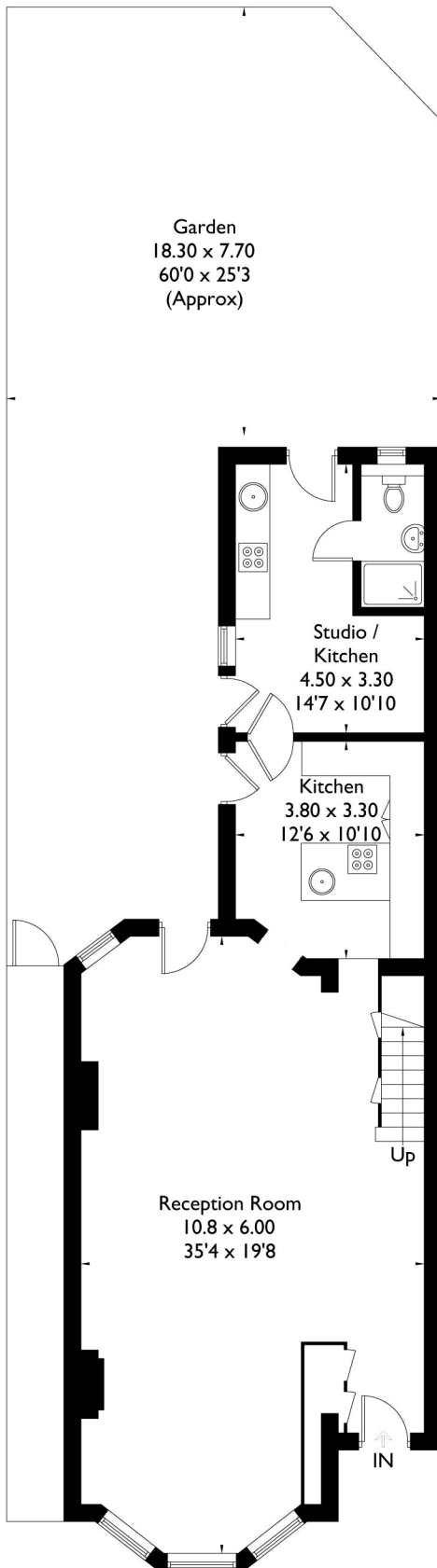


Park Road, NW10

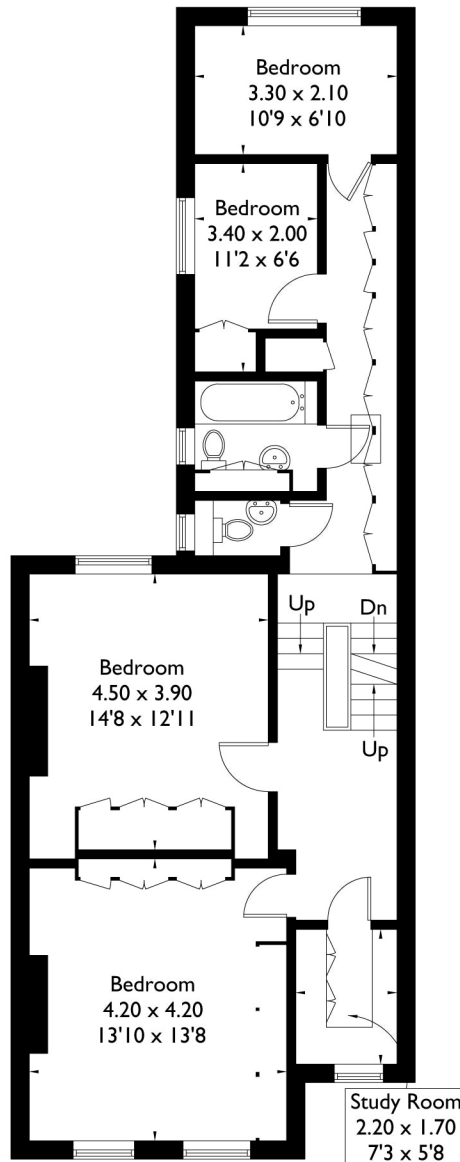
Approximate Gross Internal Area = 218.1 sq m / 2348 sq ft



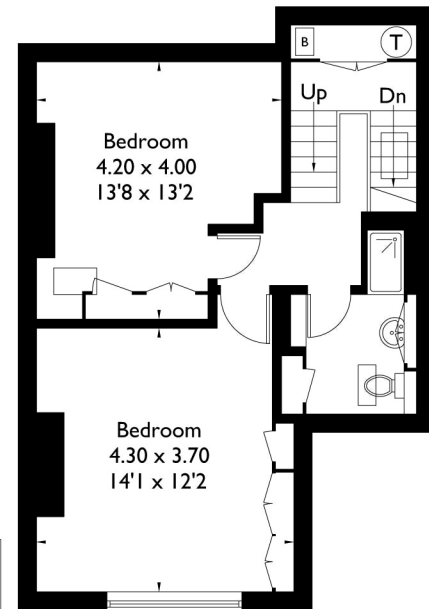
Garden
18.30 x 7.70
60'0 x 25'3
(Approx)



Ground Floor



First Floor



Second Floor

FLOORPLANZ © 2018 0203 9056099 Ref: 205178

This plan is for layout guidance only. Drawn in accordance with RICS guidelines. Not drawn to scale unless stated. Windows & door openings are approximate. Whilst every care is taken in the preparation of this plan, please check all dimensions, shapes & compass bearings before making any decisions reliant upon them.