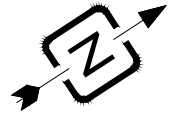



Victoria Park Road, E9

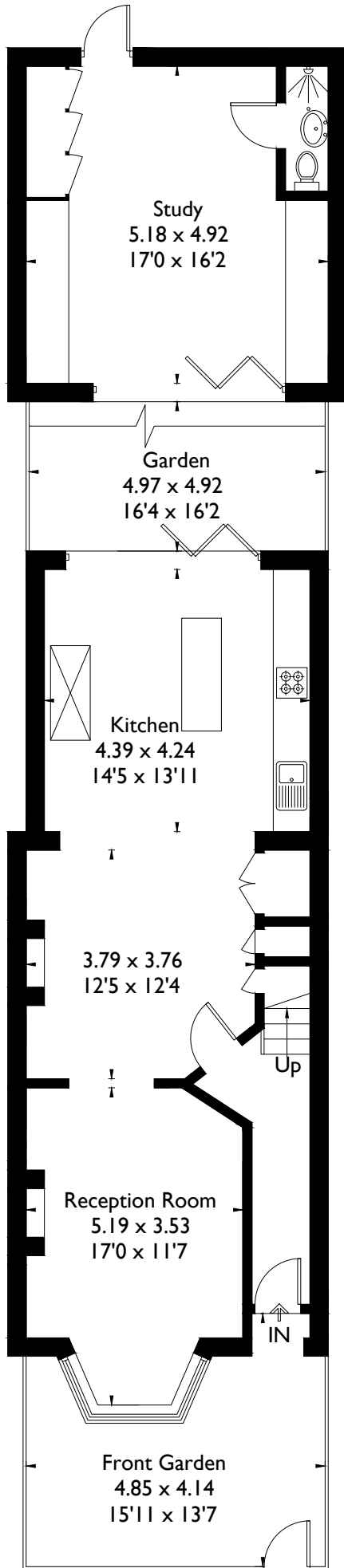
Approximate Gross Internal Area = 123.8 sq m / 1332 sq ft
Study = 25.7 sq m / 276 sq ft
Total = 149.5 sq m / 1609 sq ft



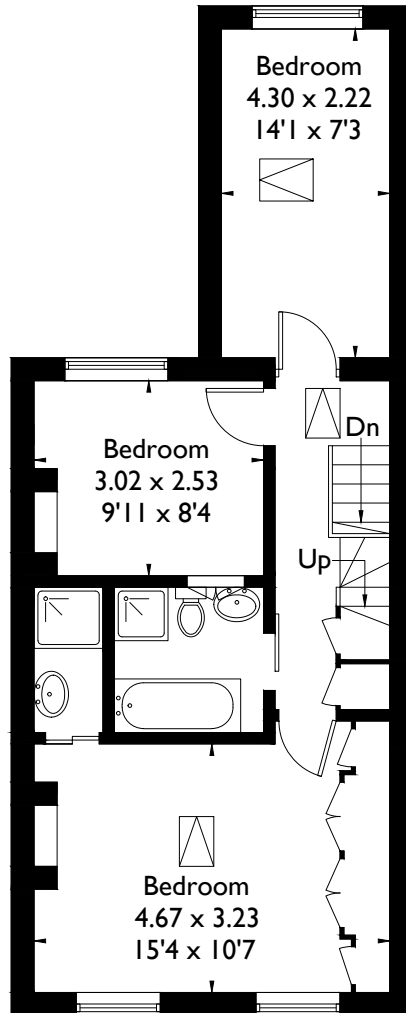
Floorplanz © 2018
0203 9056099 Ref: 210422

This plan is for layout guidance only.
Drawn in accordance with
RICS guidelines. Not drawn to
scale, unless stated. Windows &
door openings are approximate.
Whilst every care is taken in the
preparation of this plan, please check
all dimensions, shapes & compass
bearings before making any
decisions reliant upon them.

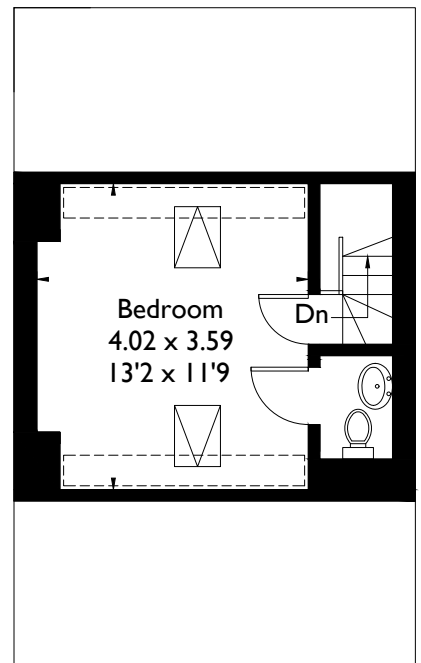
 = Reduced headroom below 1.5m / 5'0"



Ground Floor



First Floor



Second Floor