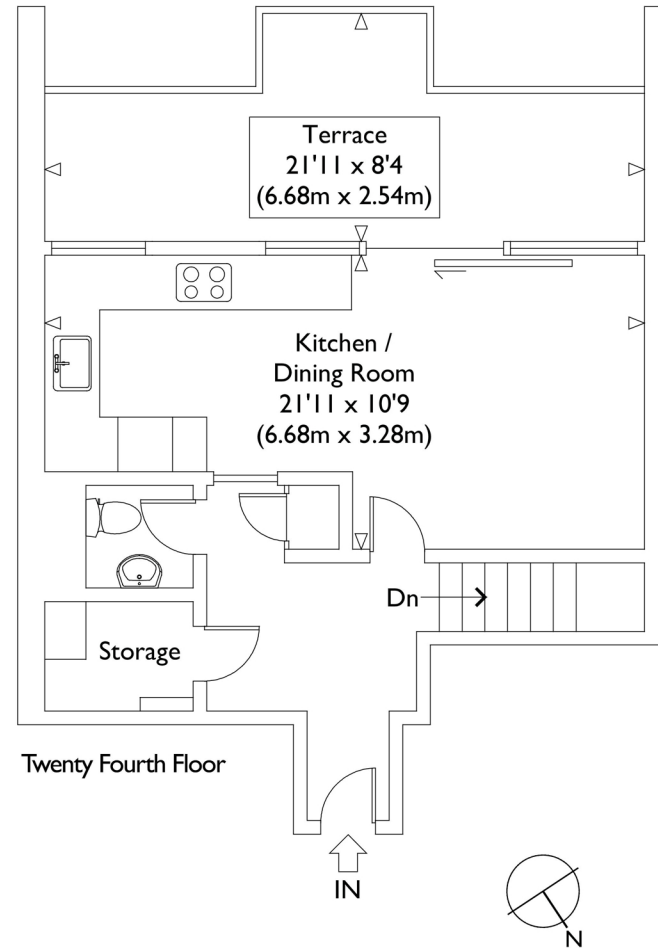


Twenty Third Floor



Twenty Fourth Floor

Illustration for identification purposes only, measurements are approximate, not to scale.

VIEWING ARRANGEMENTS  
 Telephone: +44 (0)20 3795 5920  
 Email: [viewings@themodernhouse.com](mailto:viewings@themodernhouse.com)

Trellick Tower, Golborne Road, London W10

Approximate Gross Internal Floor Area : 1128 sq ft / 104.8 sq m

