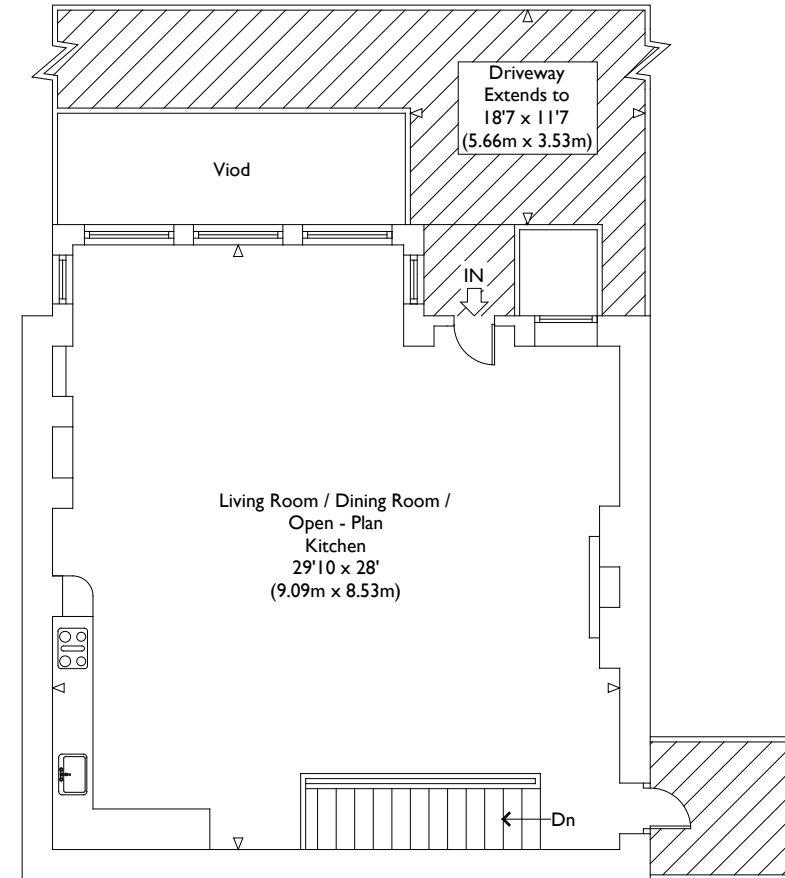


Lower Ground Floor



Ground Floor

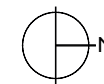


Illustration for identification purposes only, measurements are approximate, not to scale.

VIEWING ARRANGEMENTS
Telephone: +44 (0)20 3795 5920
Email: viewings@themodernhouse.com

HOXTON STREET, LONDON N1

Approximate Gross Internal Floor Area : 1968 sq ft / 182.8 sq m

THE MODERN HOUSE