

Parkham Wood House, Parkham Road, Brixham

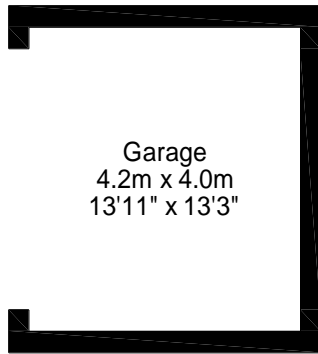
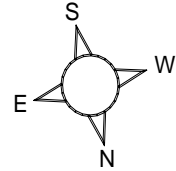
Approximate Gross Internal Area

Main House = 1453 Sq Ft/135 Sq M

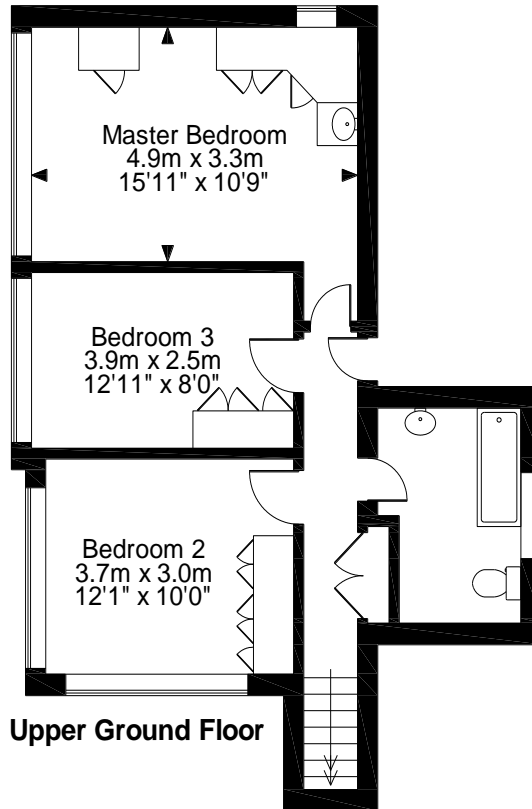
Garage = 184 Sq Ft/17 Sq M

Office = 133 Sq Ft/12 Sq M

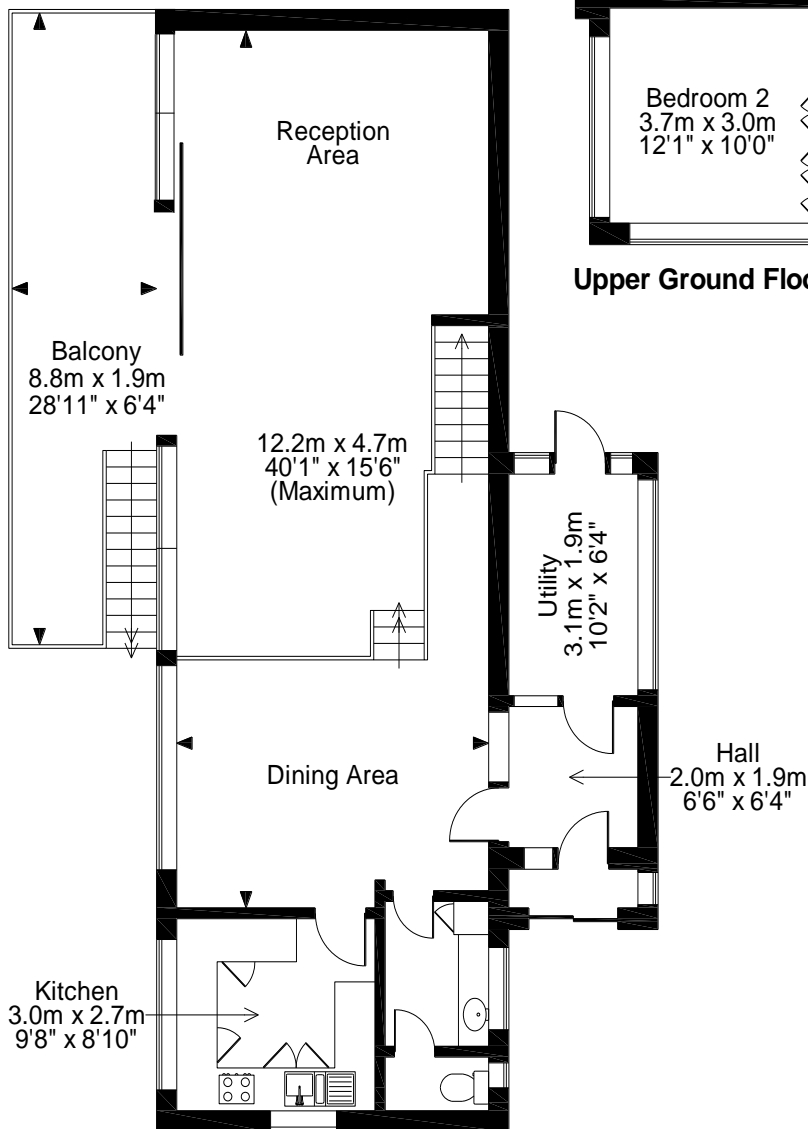
Total = 1770 Sq Ft/164 Sq M



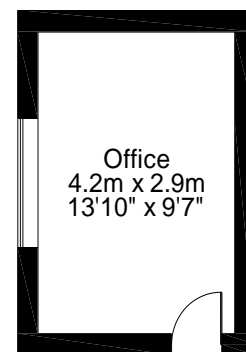
Garage Below Office



Upper Ground Floor



Ground Floor



Office Below Kitchen

FOR ILLUSTRATIVE PURPOSES ONLY - NOT TO SCALE

The position & size of doors, windows, appliances and other features are approximate only.

© ehouse. Unauthorised reproduction prohibited. Drawing ref. dig/8074500/MPO