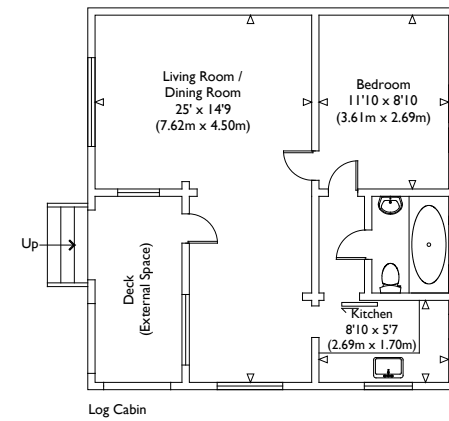
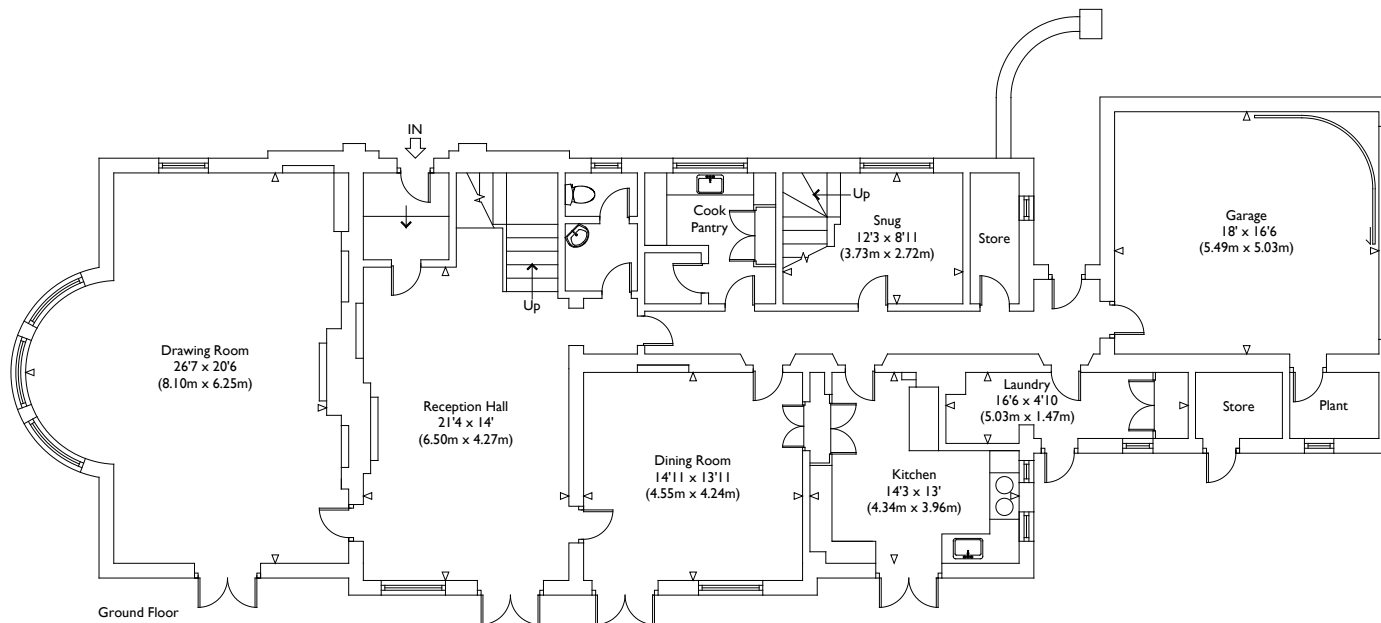
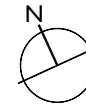


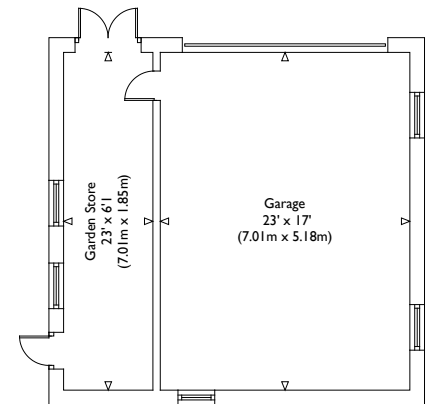
First Floor



Log Cabin



Ground Floor



Ground Floor

KINGSTON ROAD, FRILFORD, OXFORDSHIRE, OX13

Main House Approximate Area : 3889 sq ft / 361.3 sq m

Garage / Garden Store Area : 542 sq ft / 50.4 sq m

Log Cabin Area : 518 sq ft / 48.1 sq m

Total Approximate Gross Internal Floor Area : 4949 sq ft / 459.8 sq m

Illustration for identification purposes only, measurements are approximate, not to scale.

VIEWING ARRANGEMENTS

Telephone: +44 (0)20 3795 5920

Email: [viewings@themodernhouse.com](mailto:viewings@themodernhouse.com)

THE MODERN HOUSE