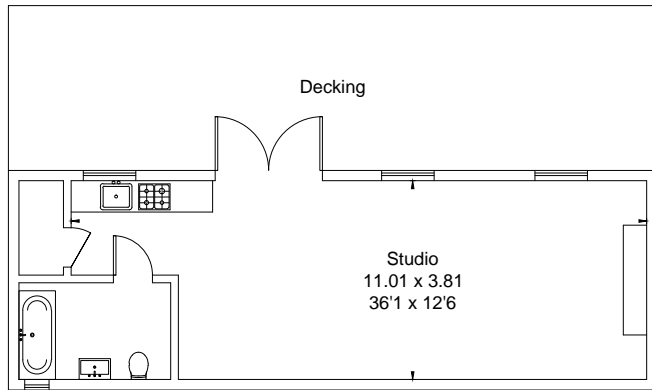
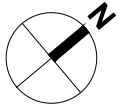
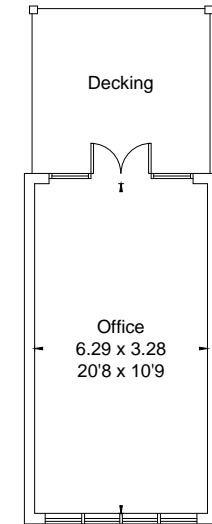
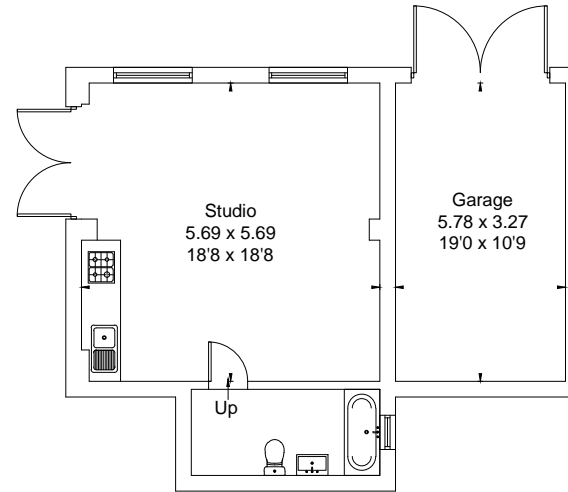


Approximate Area = 237.2 sq m / 2553 sq ft
 Outbuildings = 124.6 sq m / 1341 sq ft
 Total = 361.8 sq m / 3894 sq ft
 Including Limited Use Area (7.6 sq m / 82 sq ft)

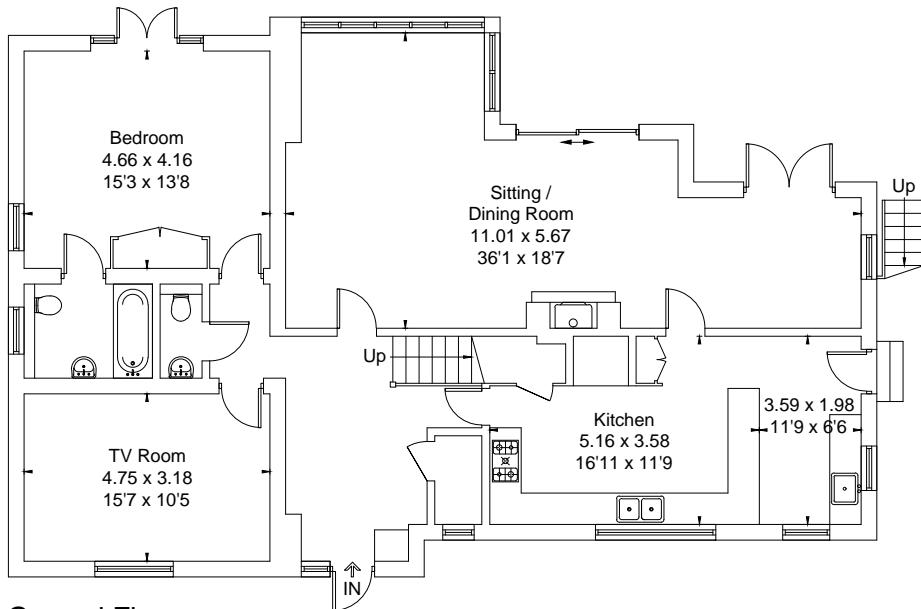


Outbuildings

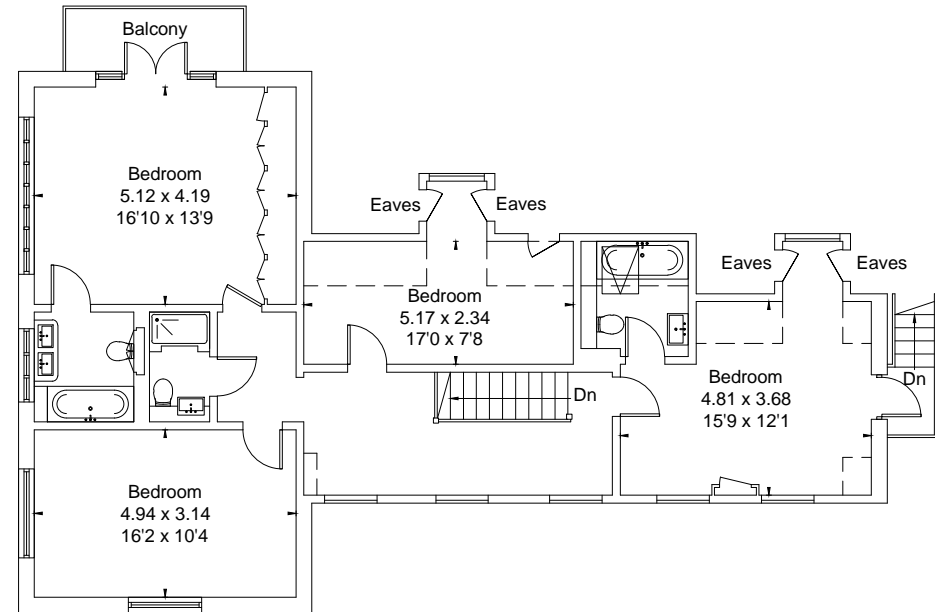
(Not Shown In Actual Location / Orientation)



= Reduced head height below 1.5m



Ground Floor



First Floor

Surveyed and drawn in accordance with the International Property Measurement Standards (IPMS 2: Residential)