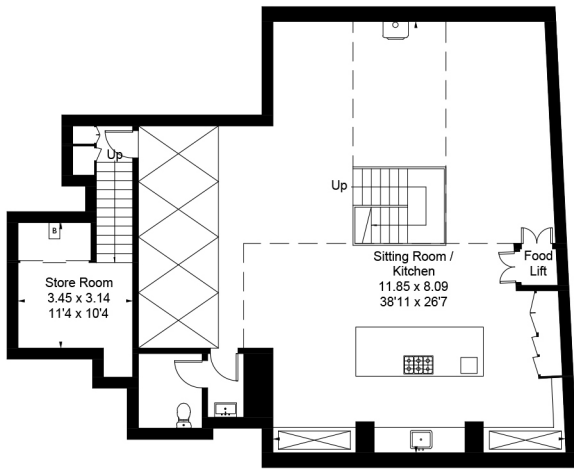
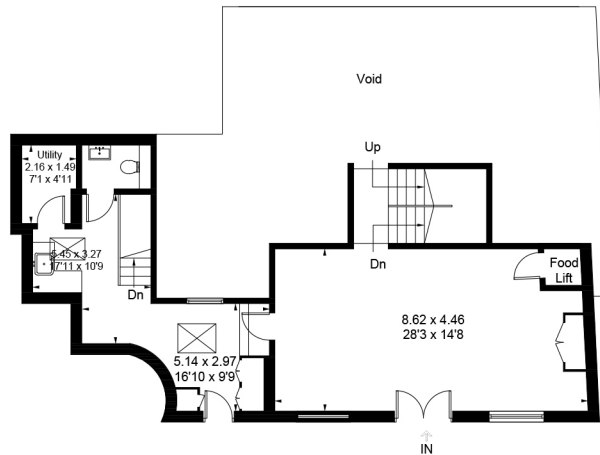


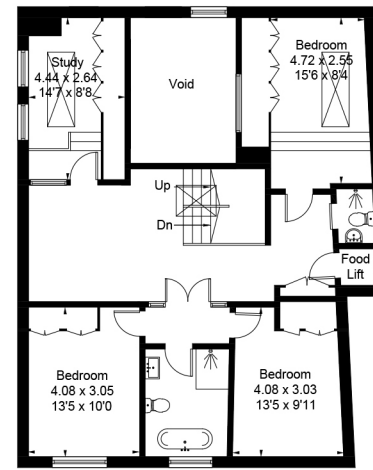
Approximate Gross Floor Area: 367.7 sq m / 3956 sq ft
 Approximate Gross Floor Area: 491 sq m / 5285 sq ft (Including Voids)



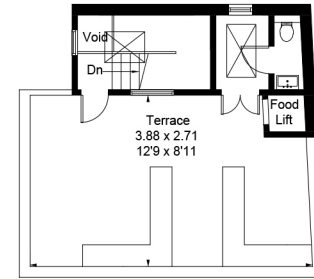
Basement
 Area = 138.1 sq m / 1486 sq ft
 (Excluding Void)



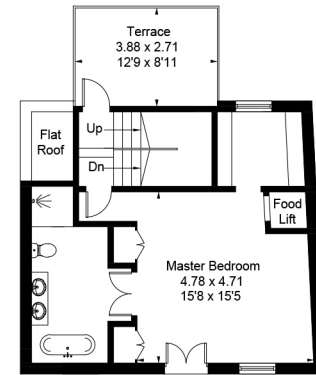
Ground Floor
 Area = 71.5 sq m / 769 sq ft



First Floor
 Area = 95.8 sq m / 1031 sq ft
 (Excluding Void)



Third Floor
 Area = 12.7 sq m / 136 sq ft
 (Excluding Void)



Second Floor
 Area = 49.6 sq m / 534 sq ft