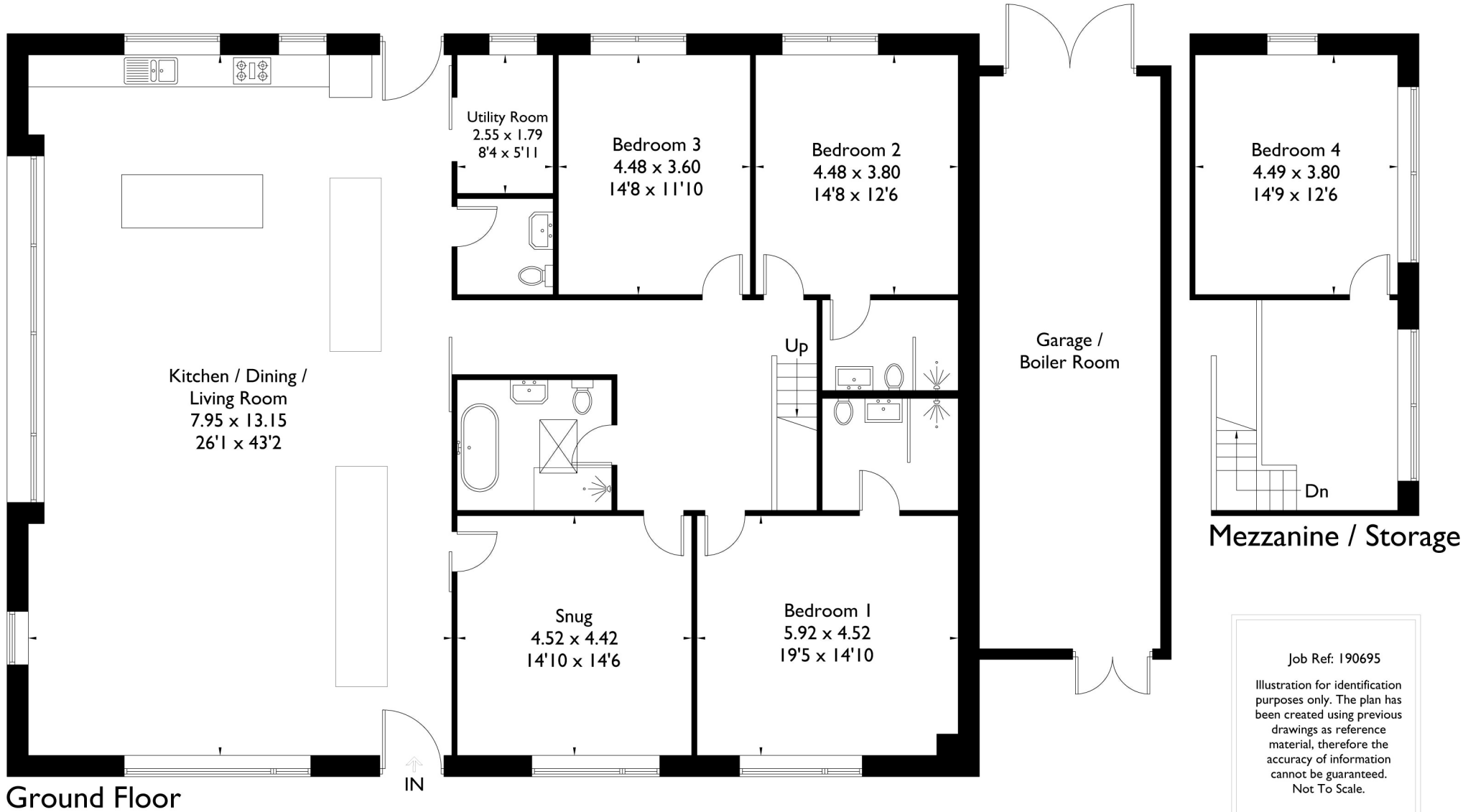




Approximate Gross Internal Area = 254.6 sq m / 2740 sq ft
Garage / Boiler Room = 36.5 sq m / 393 sq ft
Total = 291.1 sq m / 3133 sq ft



Job Ref: 190695
Illustration for identification purposes only. The plan has been created using previous drawings as reference material, therefore the accuracy of information cannot be guaranteed.
Not To Scale.