



Kitchen
9'1 x 9'
(2.77m x 2.74m)

Courtyard
extends to
24'10 (7.57m)

Light Well

Dining Room
12'6 x 9'1
(3.81m x 2.77m)

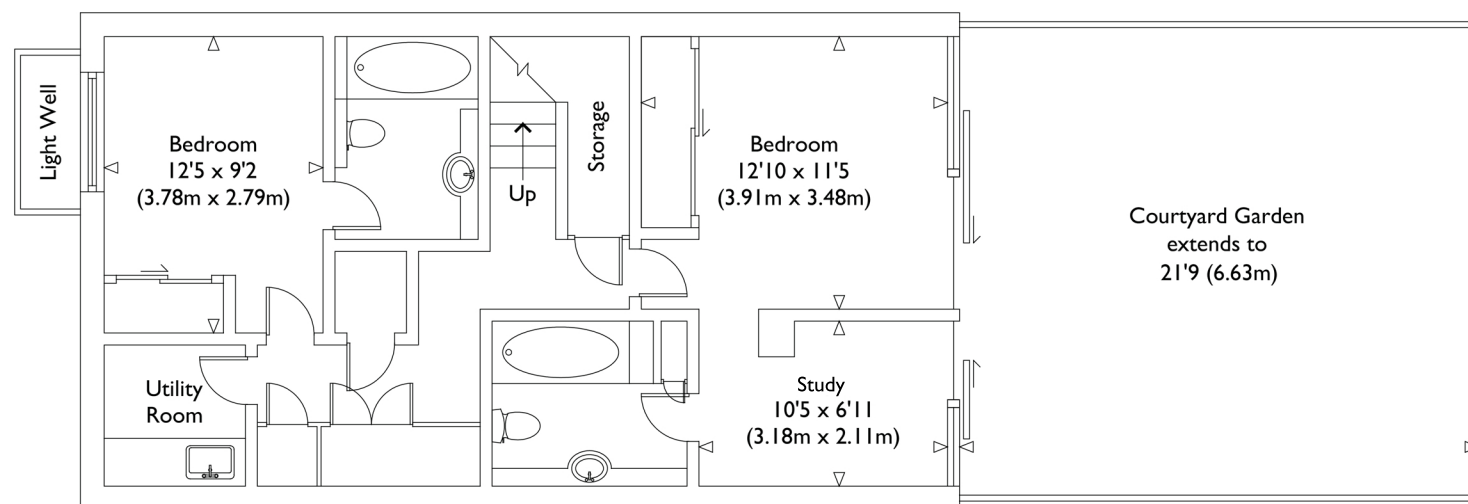
Dn

Living Room
18'8 x 12'7
(5.69m x 3.84m)

Storage

Bedroom
13'10 x 5'11
(4.22m x 1.80m)

Upper Ground Floor



Lower Ground Floor

Illustration for identification purposes only, measurements are approximate, not to scale.

VIEWING ARRANGEMENTS
Telephone: +44 (0)20 3795 5920
Email: viewings@themodernhouse.com

ST BERNARDS, CHICHESTER ROAD, CROYDON, CR0
Approximate Gross Internal Floor Area : 1340 sq ft / 124.5 sq m
(Excluding Courtyard Storage)

THE MODERN HOUSE