

THE MODERN HOUSE

Broadmere

NETHER WESTCOTE, NR CHIPPING NORTON,  
GLOUCESTERSHIRE, OX7

Approximate Gross Internal Floor Area = 279.3 sq m / 3007 sq ft

(Including Eaves Storage + Areas of Restricted Height)

Garage Approximate Area = 29.3 sq m / 315 sq ft

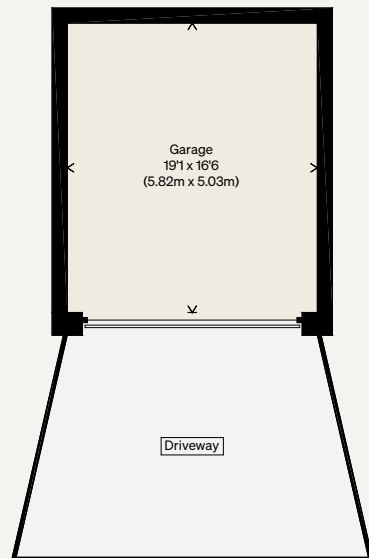
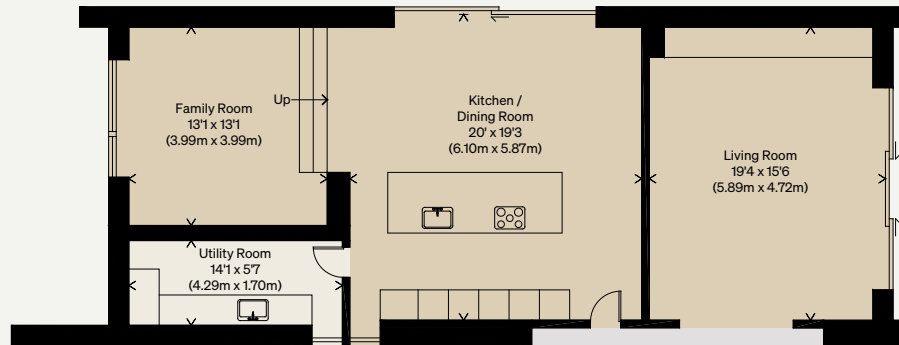
Garden Store + Greenhouse Approximate Area = 14.1 sq m / 152 sq ft

Illustration for identification purposes only,  
measurements are approximate, not to scale

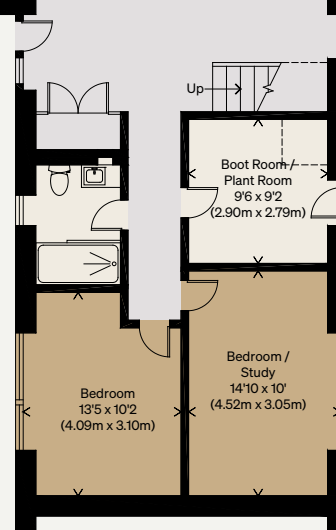
VIEWING ARRANGEMENTS

Telephone: +44 (0)20 3795 5920

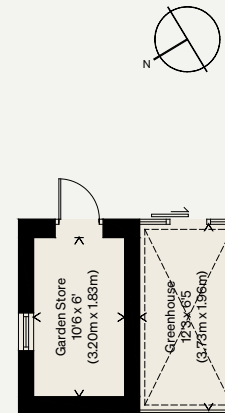
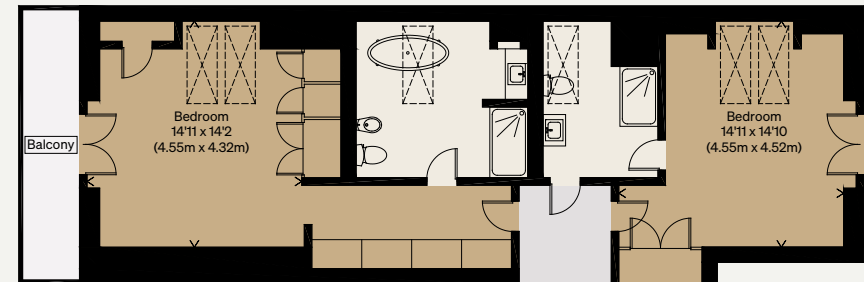
Email: [viewings@themodernhouse.com](mailto:viewings@themodernhouse.com)



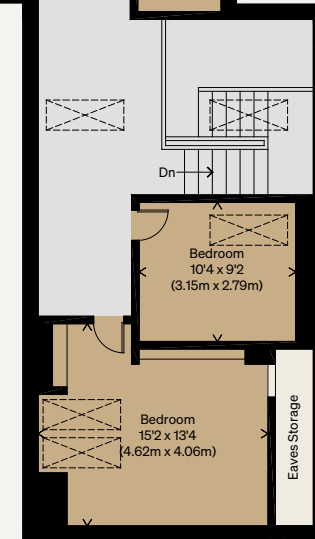
Ground Floor



Ground Floor



Ground Floor



First Floor