

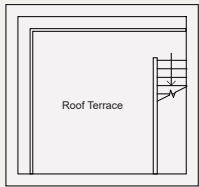
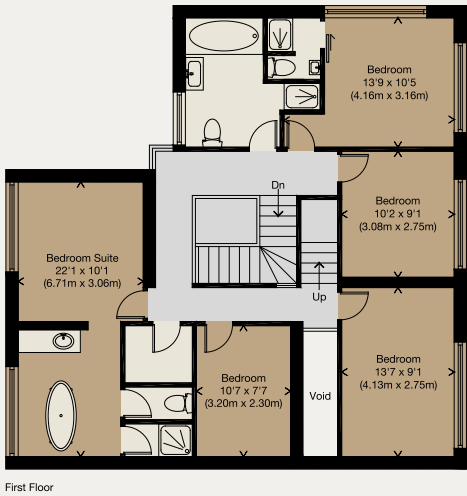
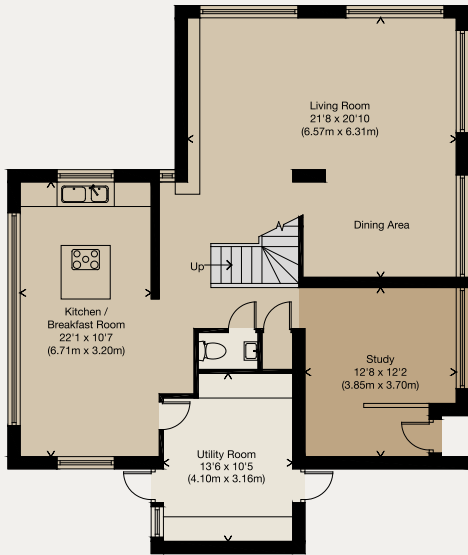
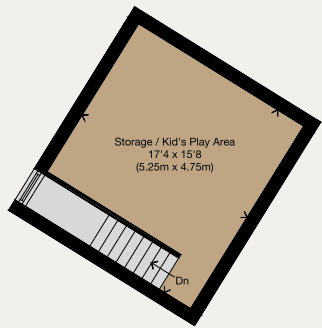
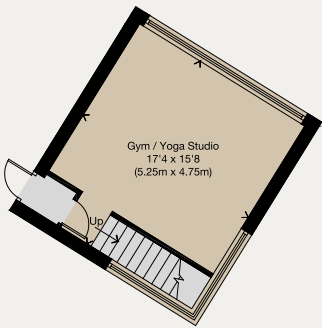
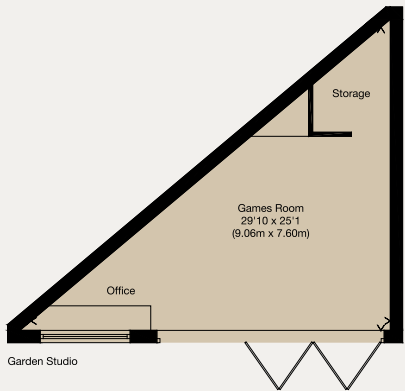
THE MODERN HOUSE

Cameron Road

LONDON BR2

Approximate Gross Internal Floor Area : 2194 sq ft / 203.8 sq m
Garden Office & Games Room : 370 sq ft / 34.4 sq m
Gym / Yoga Studio & Kid's Play Area : 532 sq ft / 49.4 sq m
Total Approximate Gross Internal Floor Area : 3096 sq ft / 287.6 sq m

Illustration for identification purposes only,
measurements are approximate, not to scale



Second Floor

THE MODERN HOUSE

Cameron Road

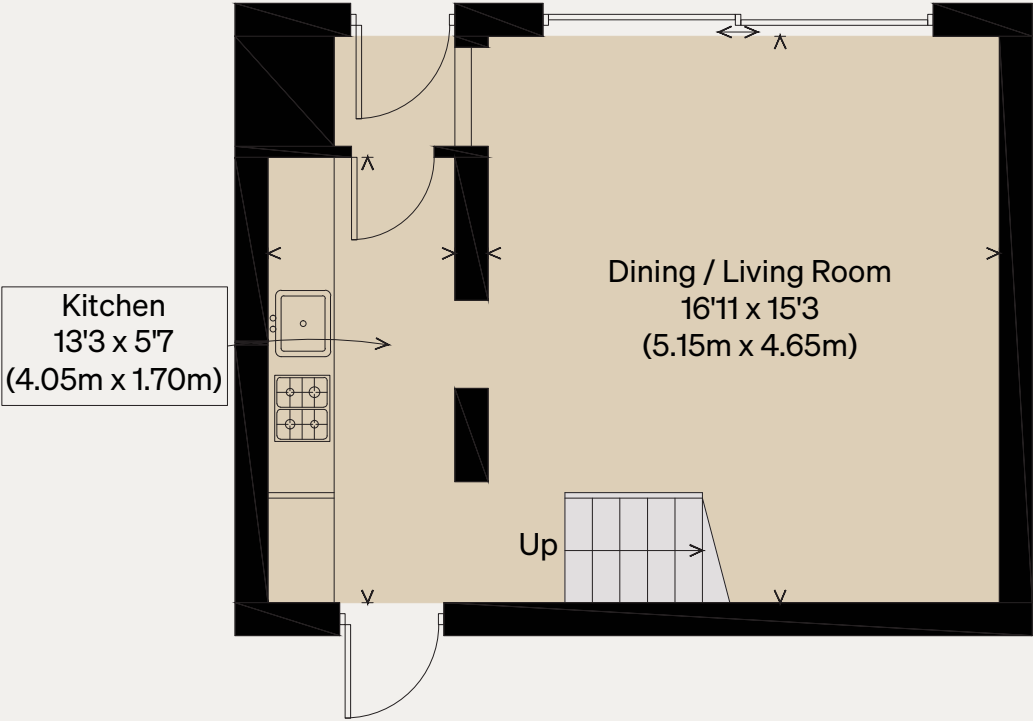
LONDON BR2

Approximate Floor Area = 64.9 sq m / 698 sq ft

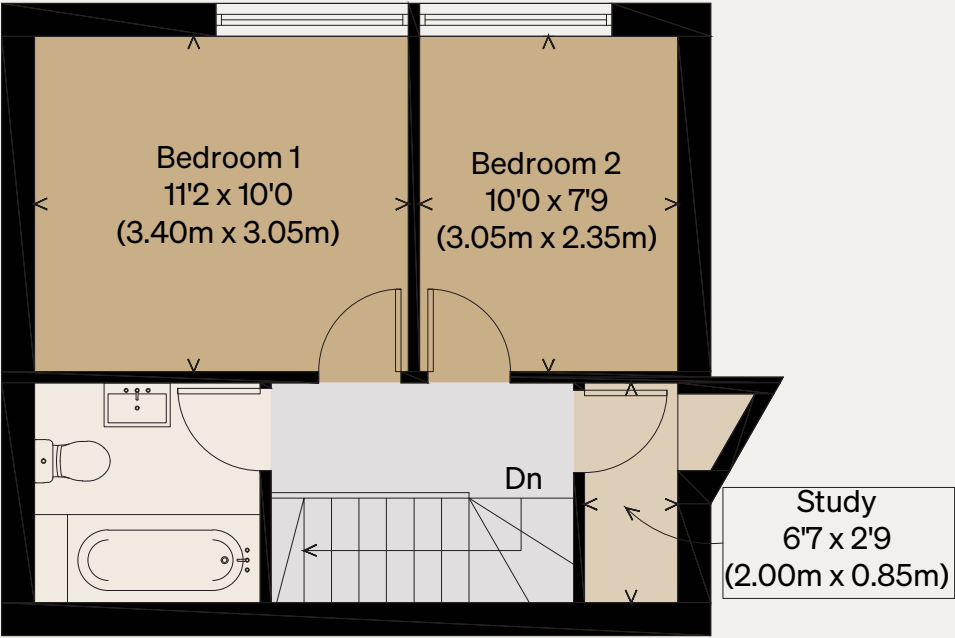
Illustration for identification purposes only,
measurements are approximate, not to scale



PROPOSED GARAGE PLANS



PROPOSED GROUND FLOOR



PROPOSED FIRST FLOOR