

THE MODERN HOUSE

Drysdale Street

LONDON N1

Approximate Floor Area = 411.3 sq m / 4427 sq ft

Illustration for identification purposes only,  
measurements are approximate, not to scale

VIEWING ARRANGEMENTS

Telephone: +44 (0)20 3795 5920

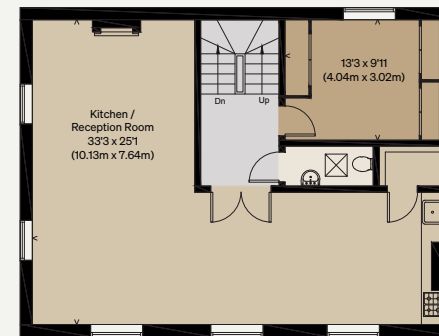
Email: [viewings@themodernhouse.com](mailto:viewings@themodernhouse.com)



GROUND FLOOR



SECOND FLOOR



FIRST FLOOR

