

THE MODERN HOUSE

Mildmay Road II

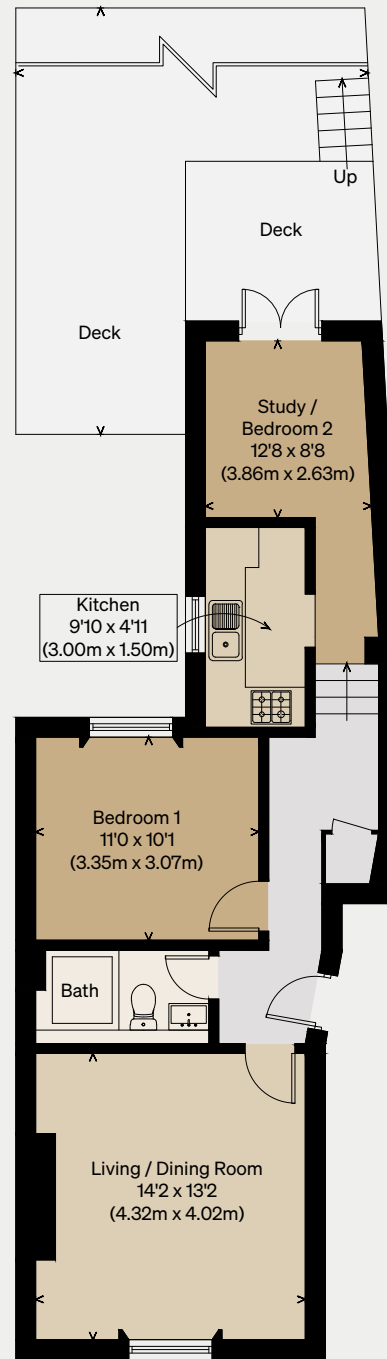
LONDON N1

Approximate Floor Area = 54.5 sq m / 587 sq ft

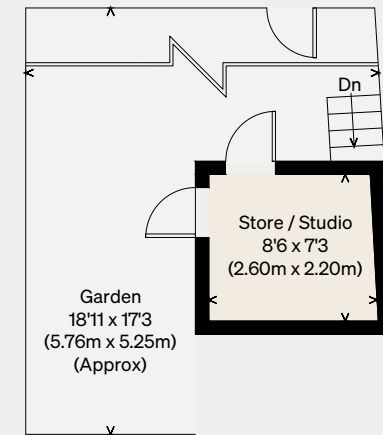
Outbuilding = 5.5 sq m / 59 sq ft

Total = 60 sq m / 646 sq ft

Illustration for identification purposes only,
measurements are approximate, not to scale



GROUND FLOOR



GROUND FLOOR

