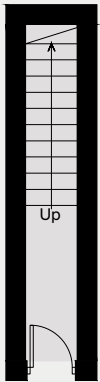
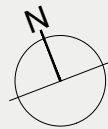


Perry Rise

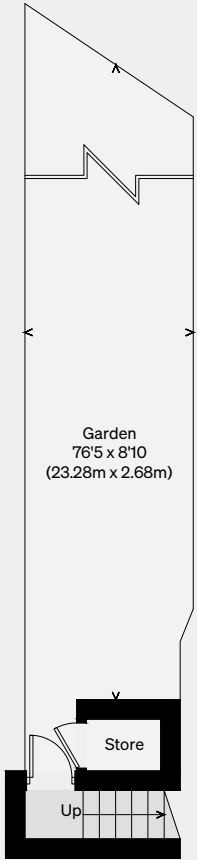
LONDON SE23

Approximate Floor Area = 92.5 sq m / 996 sq ft
Store = 0.9 sq m / 10 sq ft
Total = 93.4 sq m / 1006 sq ft

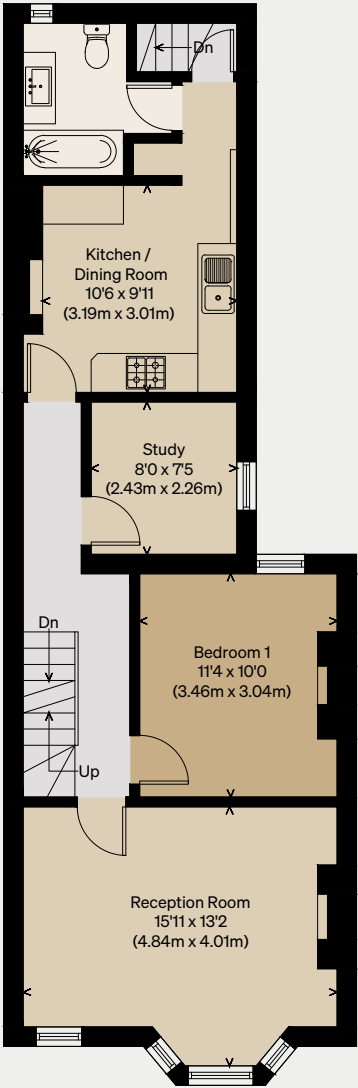
Illustration for identification purposes only,
measurements are approximate, not to scale



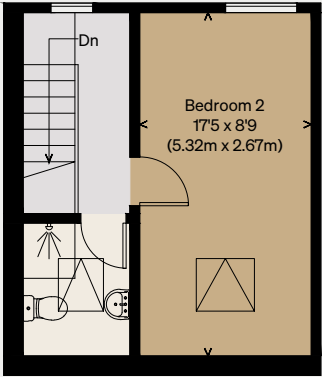
FRONT
GROUND FLOOR



REAR GROUND FLOOR



FIRST FLOOR



SECOND FLOOR