

THE MODERN HOUSE

Pyrland Road

LONDON N5

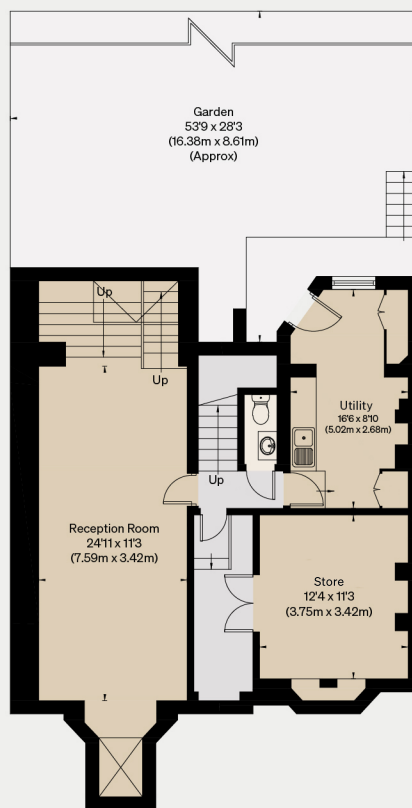
Approximate Floor Area = 310.2 sq m / 3339 sq ft
Including Limited Use Area (0.8 sq m / 9 sq ft)
(Excluding Void)

Illustration for identification purposes only,
measurements are approximate, not to scale

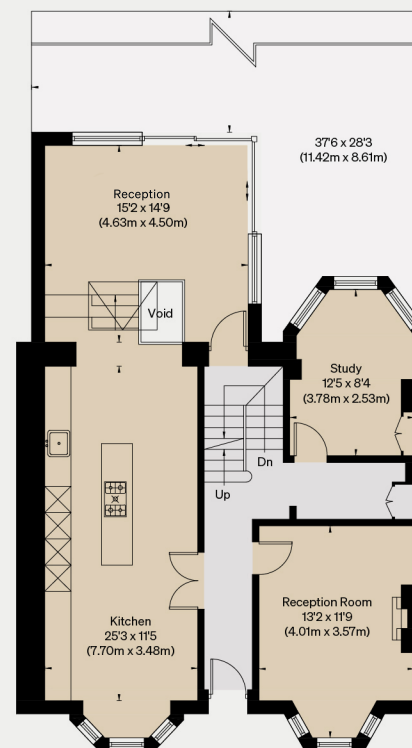
VIEWING ARRANGEMENTS

Telephone: +44 (0)20 3795 5920

Email: viewings@themodernhouse.com



LOWER GROUND FLOOR



GROUND FLOOR



SECOND FLOOR



FIRST FLOOR

