

THE MODERN HOUSE

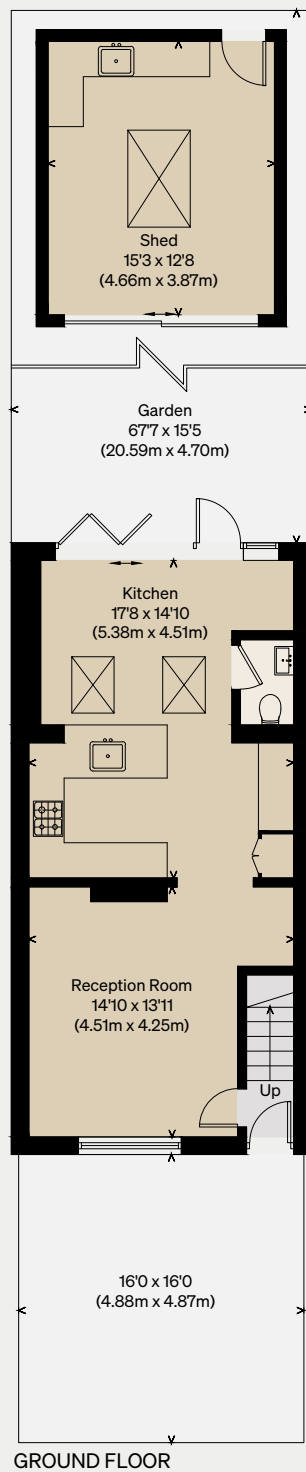
Steeds Road

LONDON N10

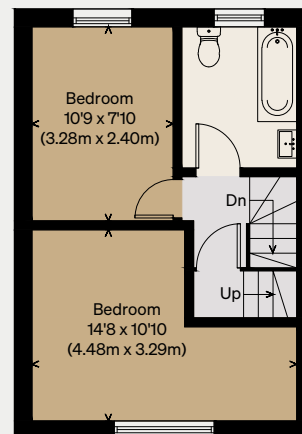
Approximate Floor Area = 95.5 sq m / 1028 sq ft
(Excluding Shed)

Including Limited Use Area (1.9 sq m / 20 sq ft)

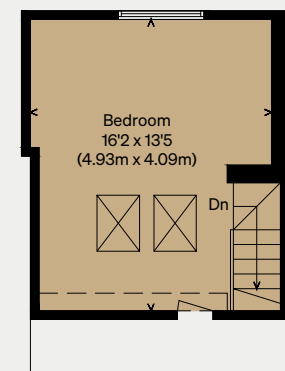
Illustration for identification purposes only,
measurements are approximate, not to scale



GROUND FLOOR



FIRST FLOOR



SECOND FLOOR

