

THE MODERN HOUSE

## Sunnyside Road

LONDON E10

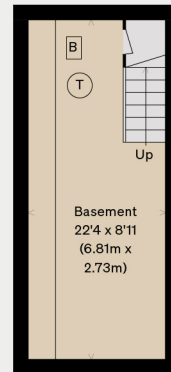
Total = 177.1 sq m / 1906 sq ft  
Including limited Use Area (0.4 sq m / 4 sq ft)  
Approximate Floor Area = 145.3 sq m / 1564 sq ft (Including Eaves)  
Basement = 18.7 sq m / 201 sq ft  
Studio = 13.1 sq m / 141 sq ft

Illustration for identification purposes only,  
measurements are approximate, not to scale

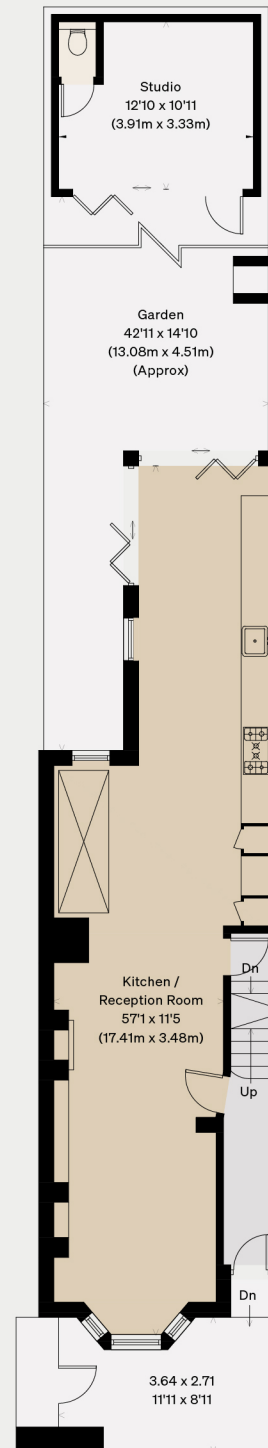
### VIEWING ARRANGEMENTS

Telephone: +44 (0)20 3795 5920

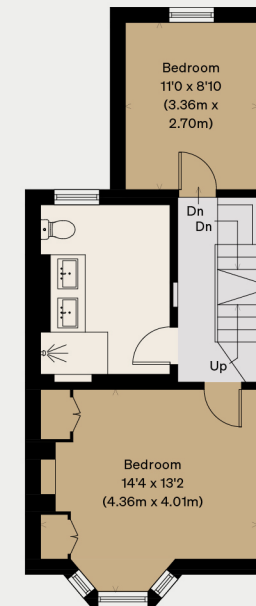
Email: [viewings@themodernhouse.com](mailto:viewings@themodernhouse.com)



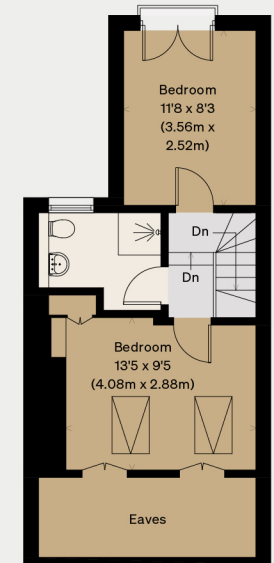
BASEMENT



GROUND FLOOR



FIRST FLOOR



SECOND FLOOR

