

THE MODERN HOUSE

Trafalgar Avenue

LONDON, SE15

Flat Floor Area : 705 sq ft / 65.5 sq m (Excluding External Store)

Garden Studio Floor Area : 120 sq ft / 11.1 sq m

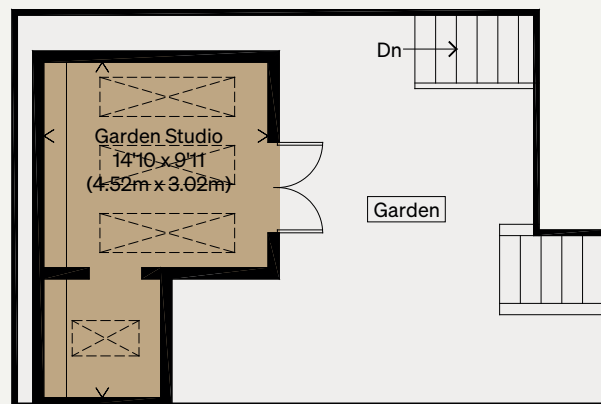
Total Floor Area : 825 sq ft / 76.6 sq m

Illustration for identification purposes only,
measurements are approximate, not to scale

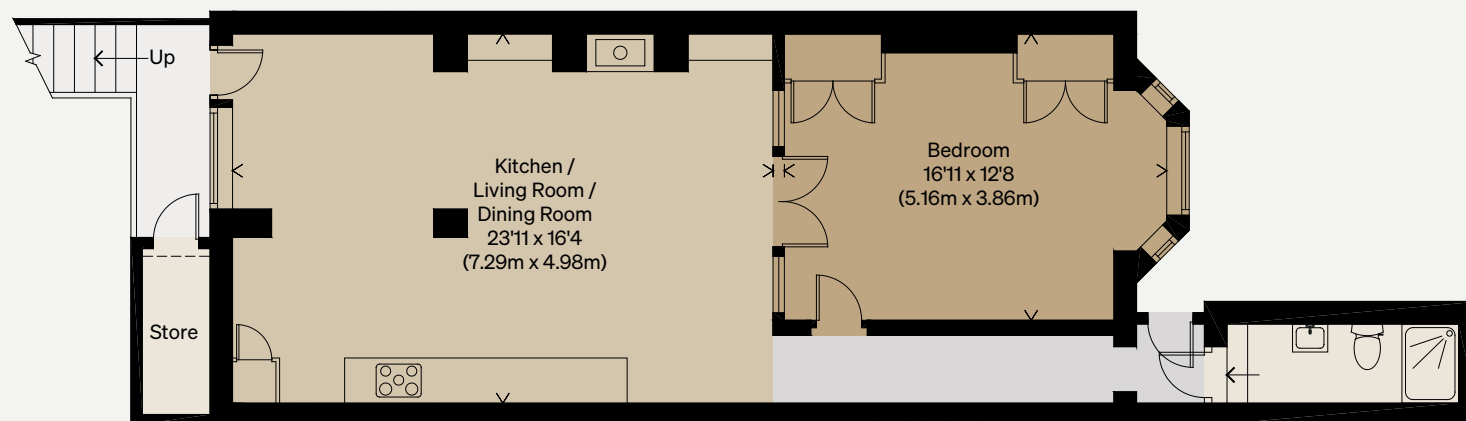
VIEWING ARRANGEMENTS

Telephone: +44 (0)20 3795 5920

Email: viewings@themodernhouse.com



Ground Floor



Lower Ground Floor