

THE MODERN HOUSE

The Log House

TURLEIGH, BRADFORD-ON-AVON

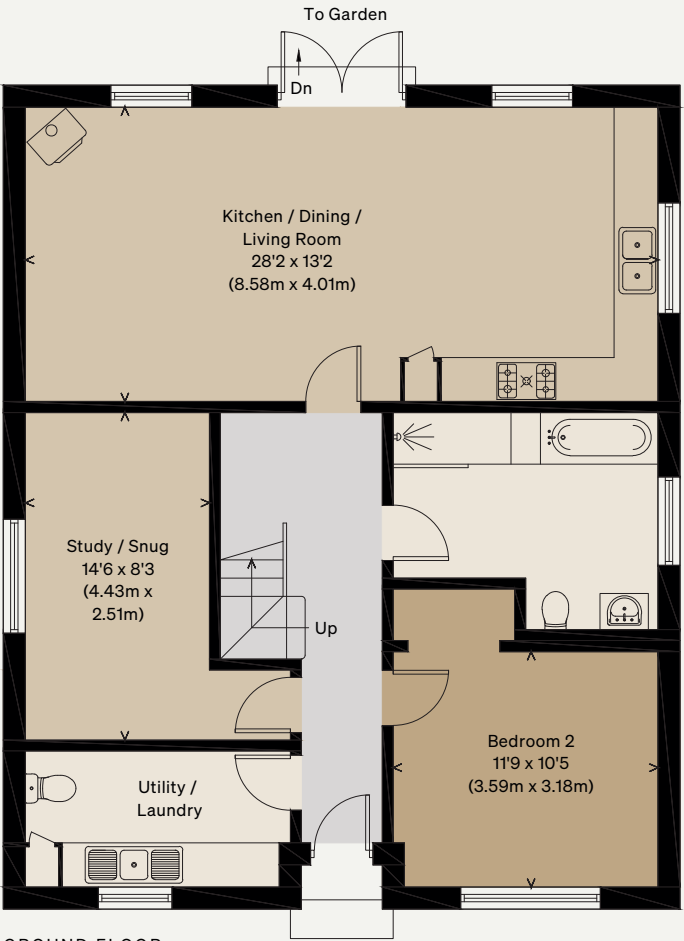
Approximate Area = 184.9 sq m / 1990 sq ft (Including Eaves)
Including Limited Use Area (40.7 sq m / 438 sq ft)

Illustration for identification purposes only,
measurements are approximate, not to scale


VIEWING ARRANGEMENTS

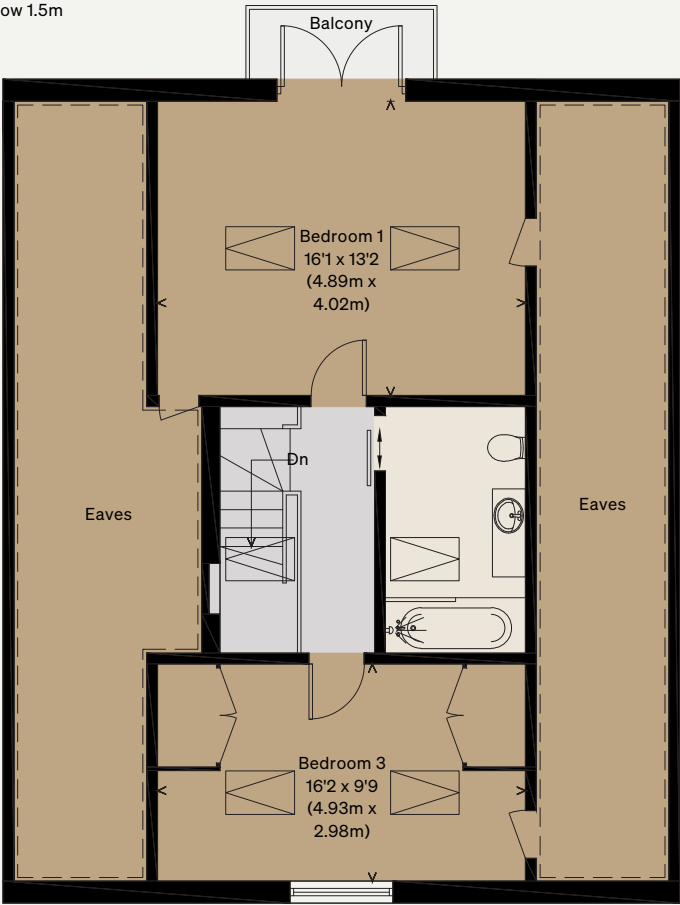
Telephone: +44 (0)20 3795 5920

Email: viewings@themodernhouse.com



GROUND FLOOR

 = Reduced head height below 1.5m



FIRST FLOOR

