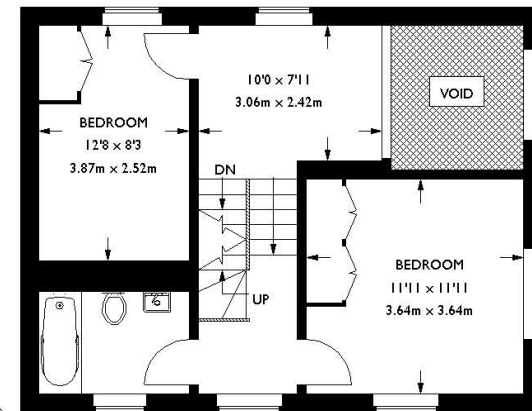
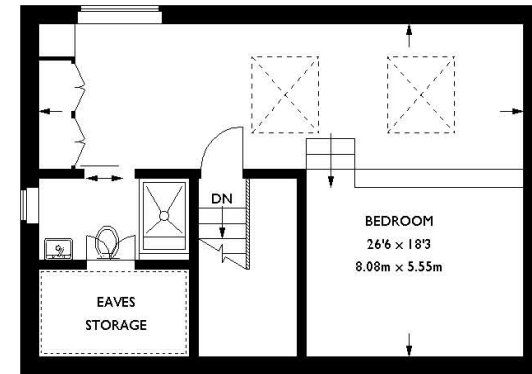
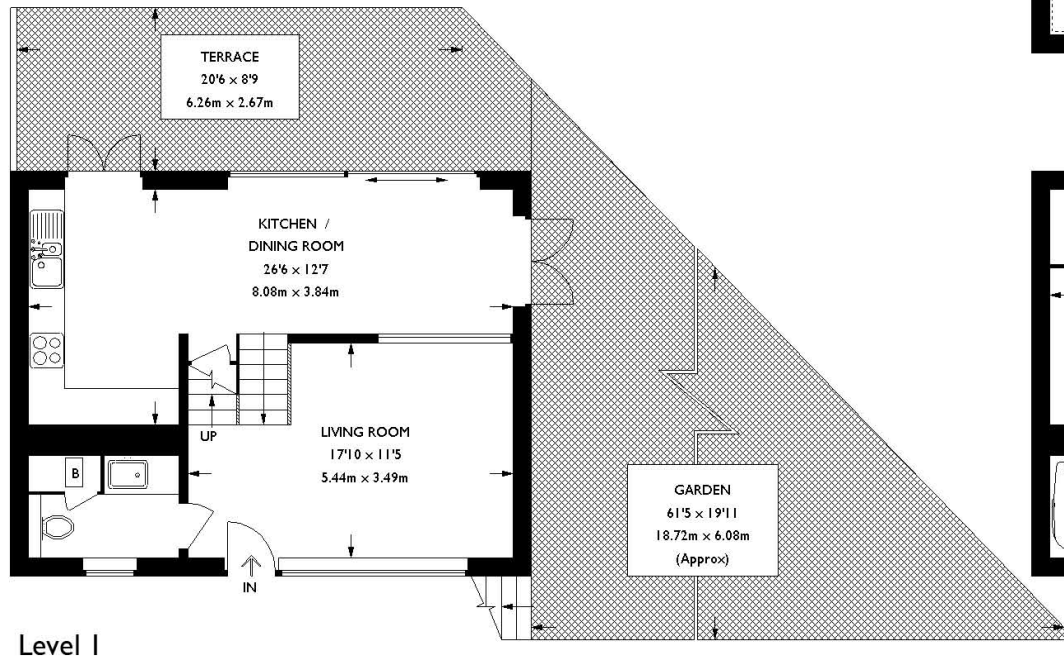


# 1d Rockmount Road. London SE19

Approximate Gross Internal Area  
 Level 1 : 538 sq ft / 50 sq m  
 Level 2 (excluding void) : 463 sq ft / 43 sq m  
 Level 3 (excluding reduced headroom / eaves storage) : 420 sq ft / 39 sq m  
 Reduced Headroom : 32 sq ft / 3 sq m  
 Total : 1453 sq ft / 135 sq m

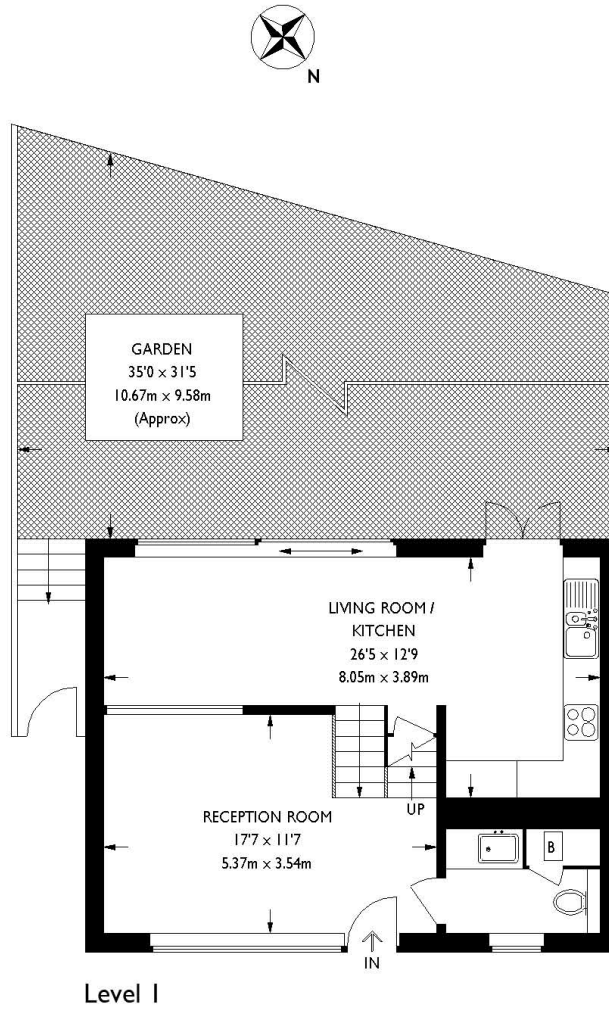
Gross Volume : 338 m<sup>3</sup>



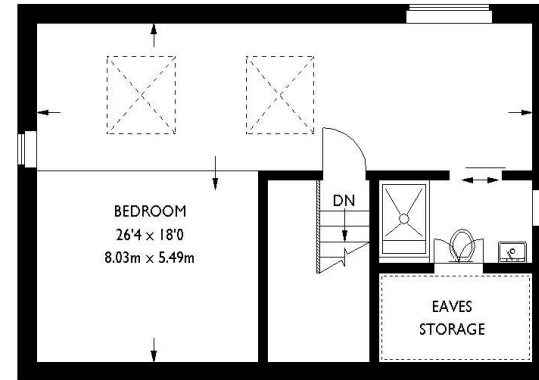
= Reduced headroom below 1.5 m / 5'0"

### 3 Essex Mews. London SE19

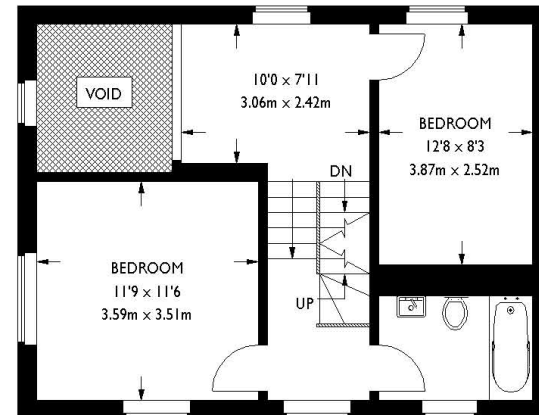
Approximate Gross Internal Area  
 Level 1 : 527 sq ft / 49 sq m  
 Level 2 (excluding void) : 463 sq ft / 43 sq m  
 Level 3 (excluding reduced headroom / eaves storage) : 420 sq ft / 39 sq m  
 Reduced Headroom : 32 sq ft / 3 sq m  
 Total : 1442 sq ft / 134 sq m  
 Gross Volume : 338 m<sup>3</sup>



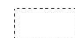
Level 1



Level 3



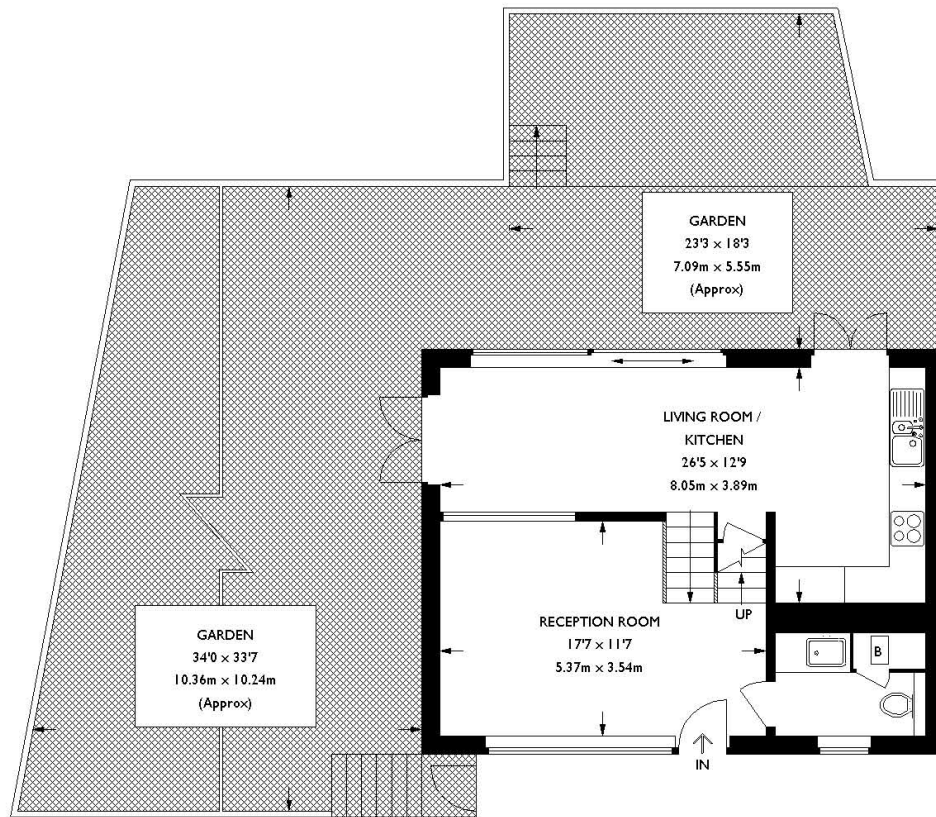
Level 2

 = Reduced headroom below 1.5 m / 5'0

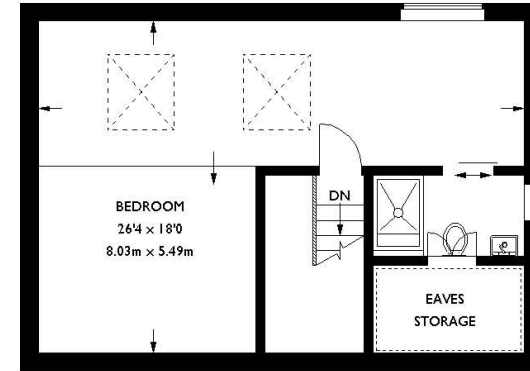
# 4 Essex Mews. London SE19

Approximate Gross Internal Area  
 Level 1 : 538 sq ft / 50 sq m  
 Level 2 (excluding void) : 463 sq ft / 43 sq m  
 Level 3 (excluding reduced headroom / eaves storage) : 420 sq ft / 39 sq m  
 Reduced Headroom : 32 sq ft / 3 sq m  
 Total : 1453 sq ft / 135 sq m

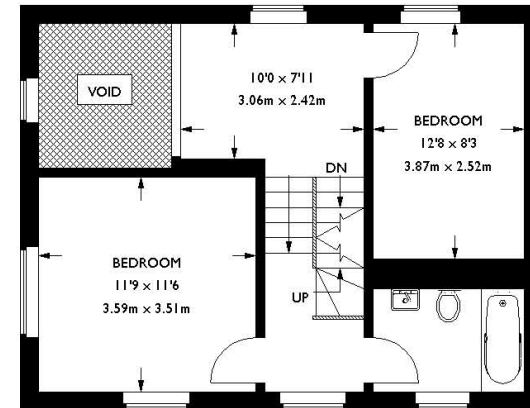
Gross Volume : 338 m<sup>3</sup>



Level 1



Level 3



Level 2

= Reduced headroom below 1.5 m / 5'0