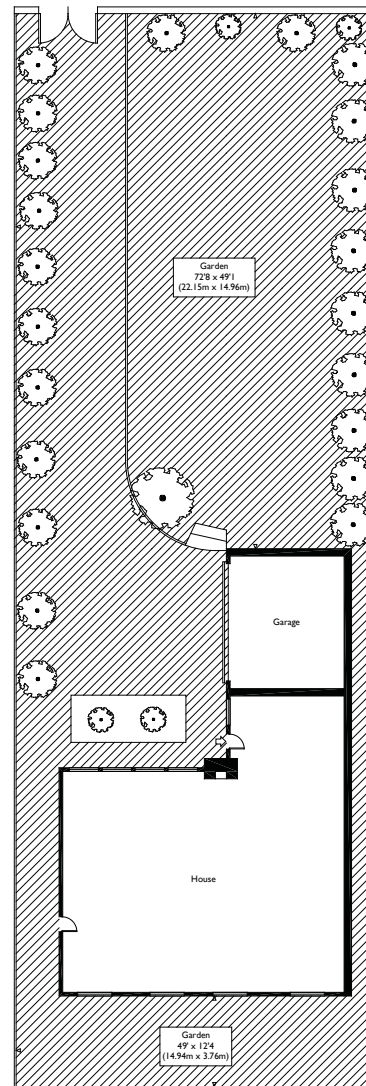


Sea Front, Hayling Island, PO11



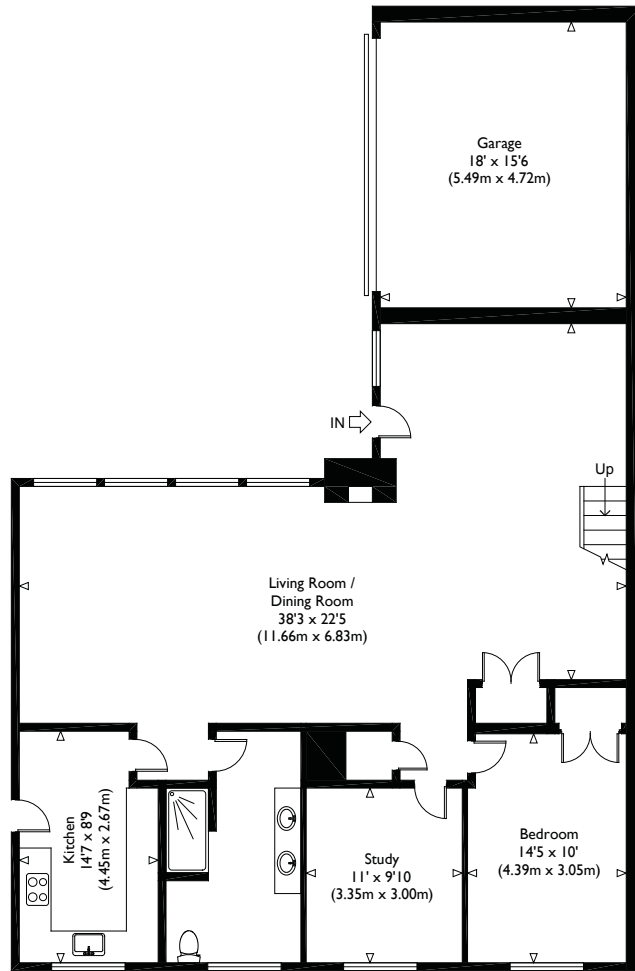
Site Plan

Illustration for identification purposes only, measurements are approximate, not to scale.

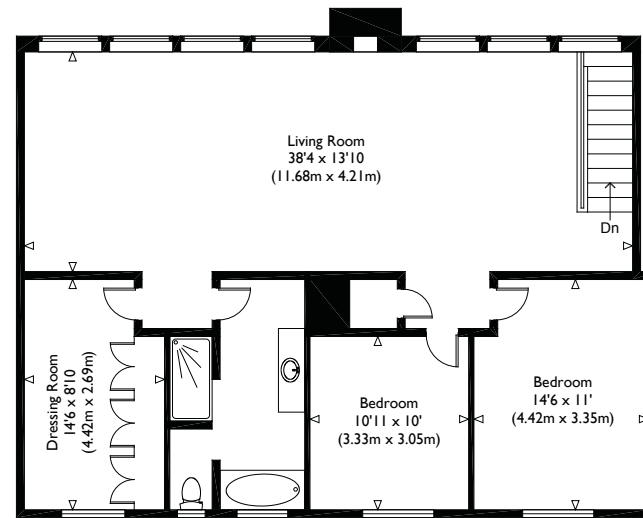
Sea Front, Hayling Island, PO11

Approximate Gross Internal Floor Area : 2723 sq ft / 253 sq m (Including Garage)

Approximate Gross Internal Floor Area : 2433 sq ft / 226 sq m (Excluding Garage)



Ground Floor



First Floor

Illustration for identification purposes only, measurements are approximate, not to scale.