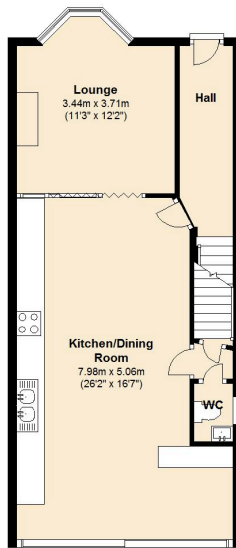


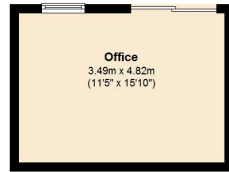
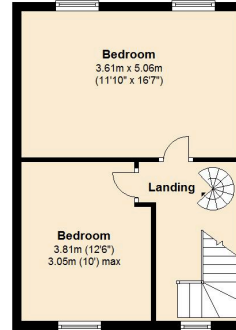
### Ground Floor

Approx. 58.6 sq. metres (631.2 sq. feet)



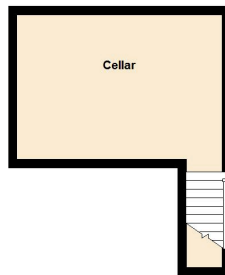
### Second Floor

Approx. 37.9 sq. metres (407.5 sq. feet)



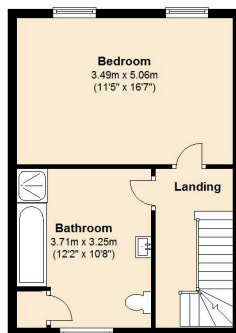
### Basement

Approx. 18.4 sq. metres (197.9 sq. feet)



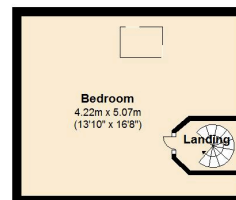
### First Floor

Approx. 37.3 sq. metres (401.7 sq. feet)



### Third Floor

Approx. 21.6 sq. metres (232.5 sq. feet)



Total area: approx. 173.8 sq. metres (1870.8 sq. feet)