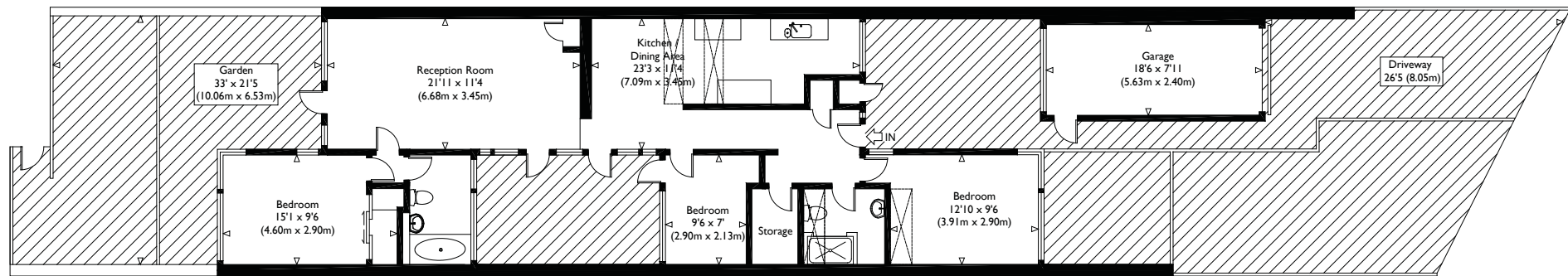
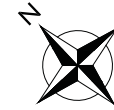


The Ryde, Hatfield, Herts, AL9

Approximate Gross Internal Floor Area : 1052 sq ft / 97.7 sq m (Excluding Garage)
Approximate Gross Internal Floor Area : 1197 sq ft / 111.2 sq m (Including Garage)



Ground Floor

Illustration for identification purposes only, measurements are approximate, not to scale.