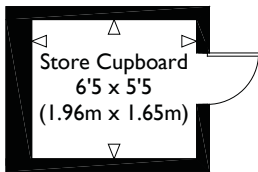


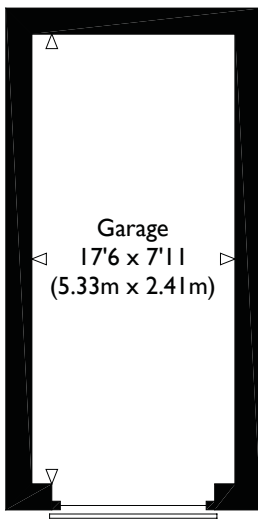
# North Grove, Highgate, London, N6

Approximate Gross Internal Floor Area : 803 sq ft / 74.6 sq m (Excluding Store Cupboard & Garage)

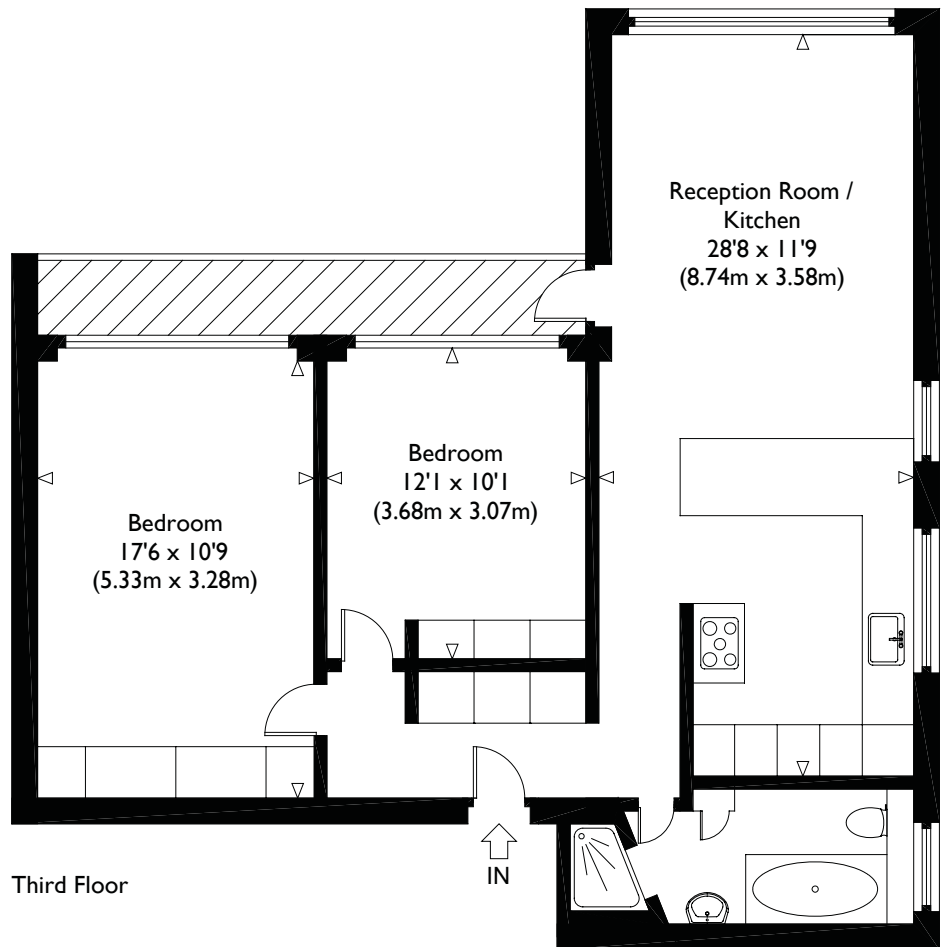
Approximate Gross Internal Floor Area : 977 sq ft / 90.8 sq m (Including Store Cupboard & Garage)



Ground Floor



Ground Floor



Third Floor

Illustration for identification purposes only, measurements are approximate, not to scale.