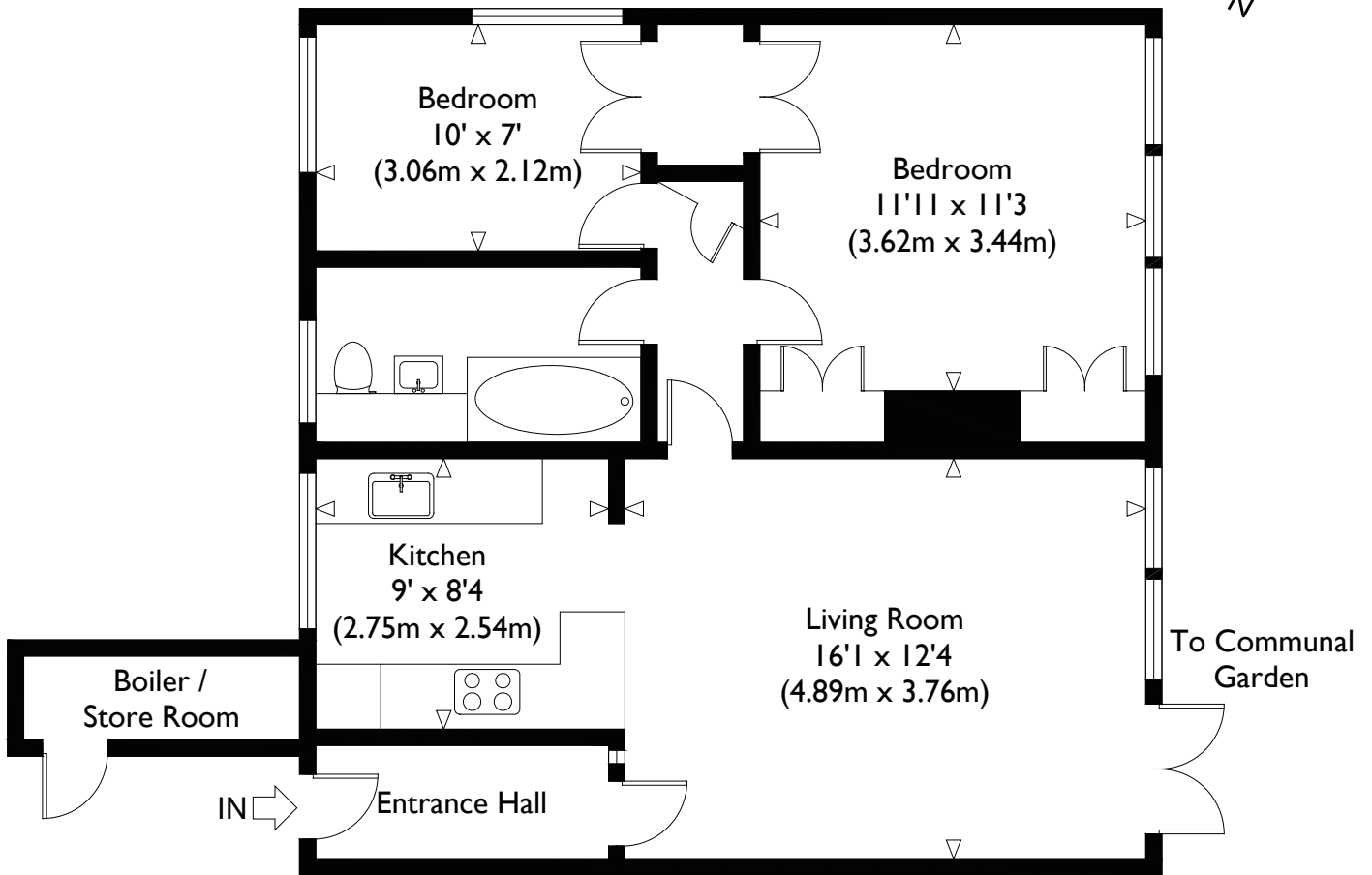


Parkleys, London, TW10

Approximate Gross Internal Floor Area : 658 sq ft / 61.1 sq m (Excluding Boiler / Store Room)

Approximate Gross Internal Floor Area : 679 sq ft / 63.1 sq m (Including Boiler / Store Room)



Ground Floor

Illustration for identification purposes only, measurements are approximate, not to scale.