

Manor Way Holyport, SL6

Approximate Gross Internal Floor Area : 3005 sq ft / 279.2 sq m (Including Garage / Store Room)
Approximate Gross Internal Floor Area : 2323 sq ft / 215.8 sq m (Excluding Garage / Store Room)

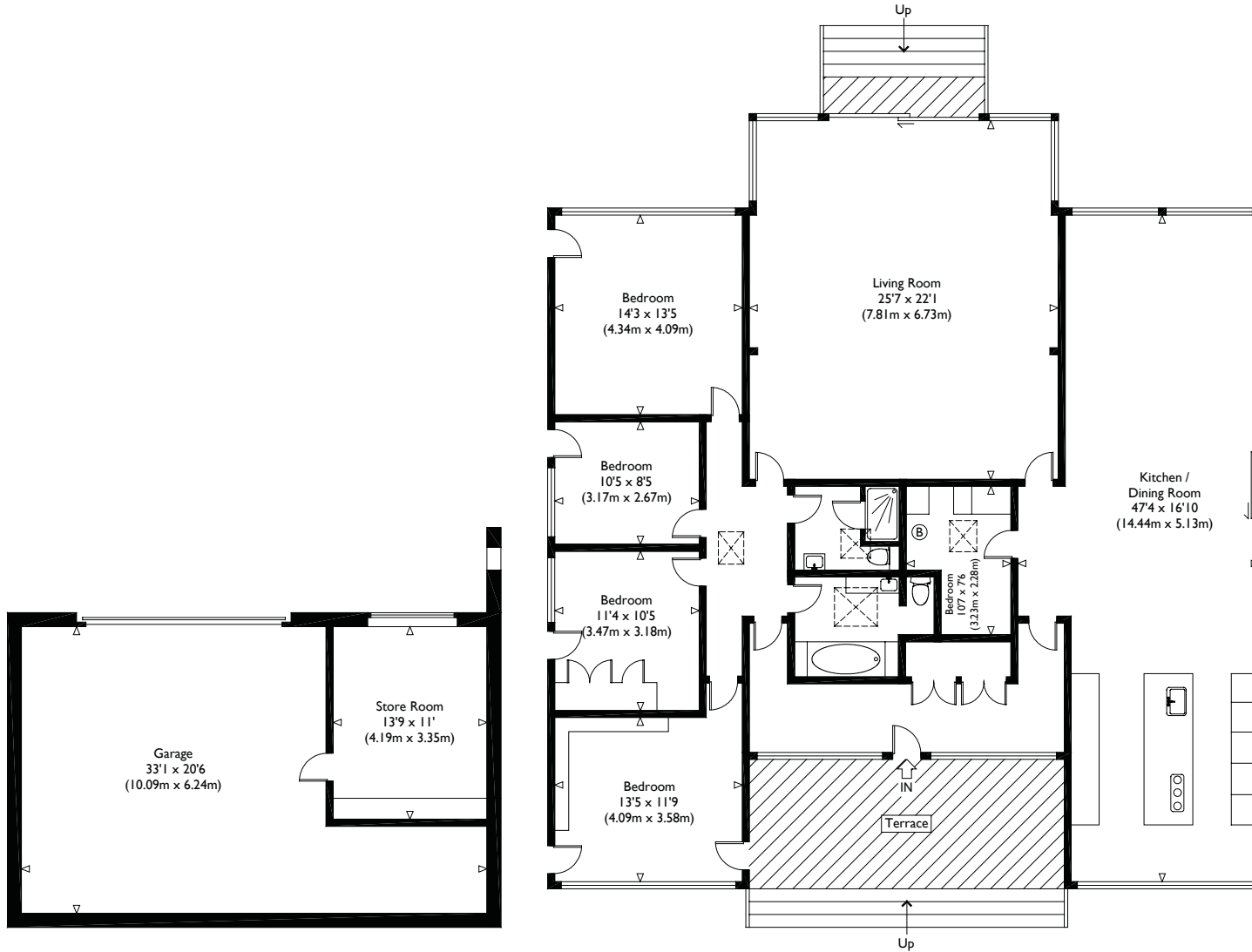


Illustration for identification purposes only, measurements are approximate, not to scale.