

GROUND FLOOR

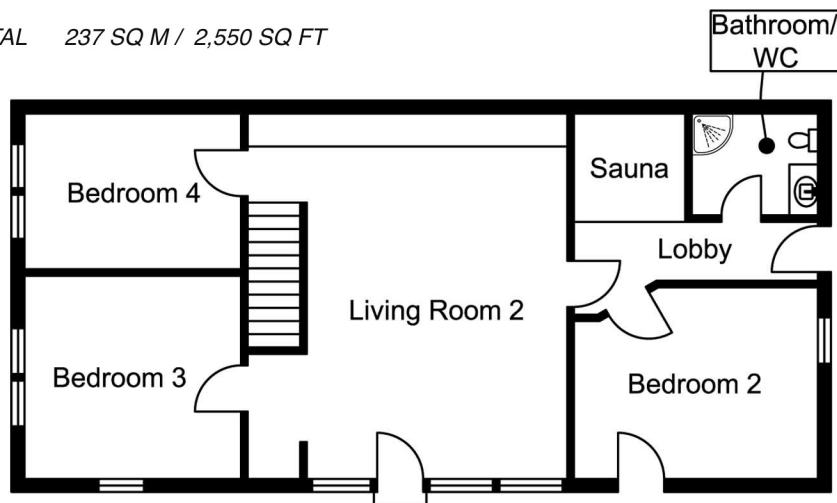
CAR PORT 5.25 SQ M
 HEAT PUMP ROOM 3.7 SQ M
 CLOAKROOM 3.9 SQ M
 LOBBY 8.8 SQ M
 KITCHEN / DINING 35.6 SQ M
 STAIR CASE 3.2 SQ M
 LIVING / DINING 52 SQ M
 BEDROOM 1 29 SQ M
 EN SUITE BATH 5.7 SQ M



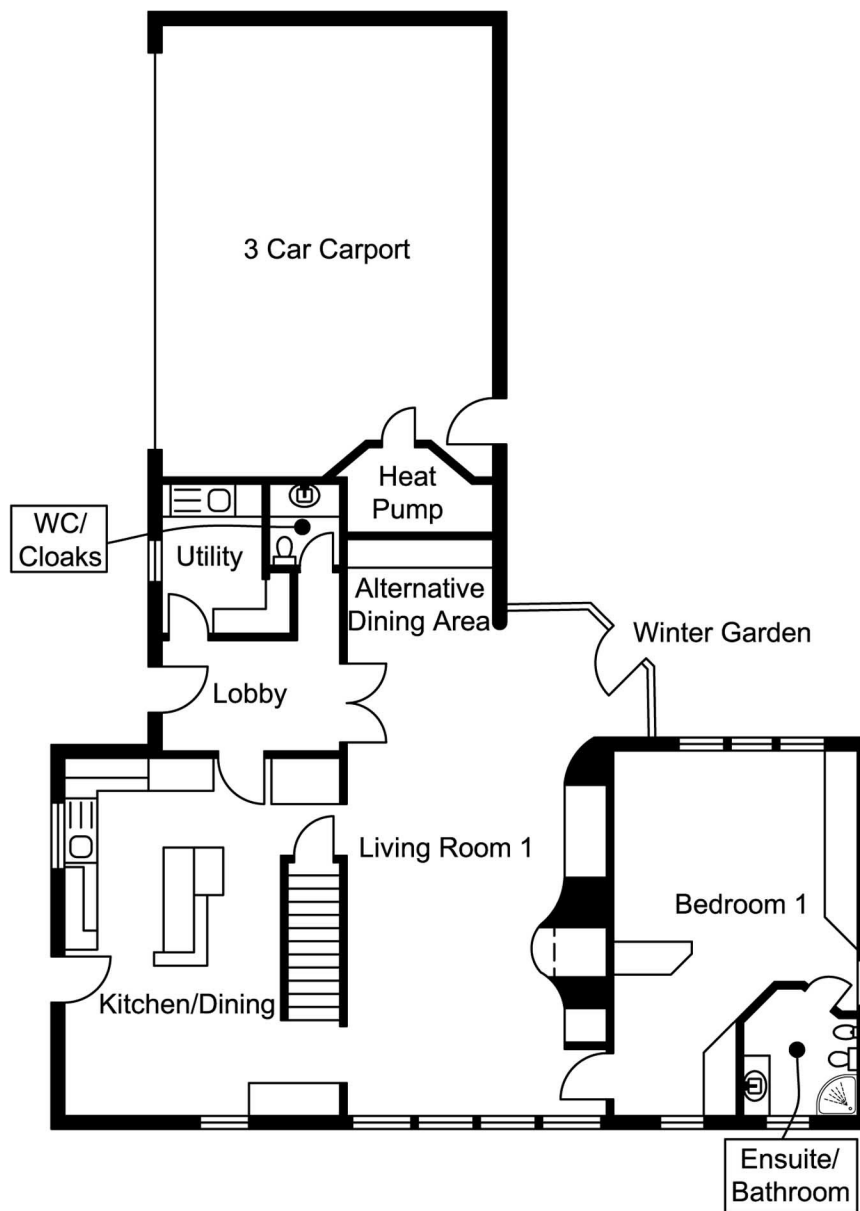
LOWER GROUND FLOOR

BEDROOM 4 12.6 SQ M
 BEDROOM 3 16 SQ M
 LIVING ROOM 30.2 SQ M
 STAIRCASE 3.2 SQ M
 SAUNA 4.8 SQ M
 BATHROOM 4.2 SQ M
 LOBBY 5.8 SQ M
 BEDROOM 2 18.2 SQ M

TOTAL 237 SQ M / 2,550 SQ FT



Lower Ground Floor



Ground Floor

Cornworthy

Whilst every attempt has been made to ensure the accuracy of the floor plan contained here, measurements of doors, windows, rooms and any other items are approximate and no responsibility is taken for any error, omission, or mis-statement. This plan is for illustrative purposes only and should be used as such by any prospective purchaser or tenant.

The services, systems and appliances shown have not been tested and no guarantee as to their operability or efficiency can be given.

www.virtual360.net